

WAAS CH 42809 W04A	APP CRS 036°	Rwy ldg 10000 TDZE 1189 Apt Elev 1189
--	------------------------	--

RNAV (GPS) Y RWY 4

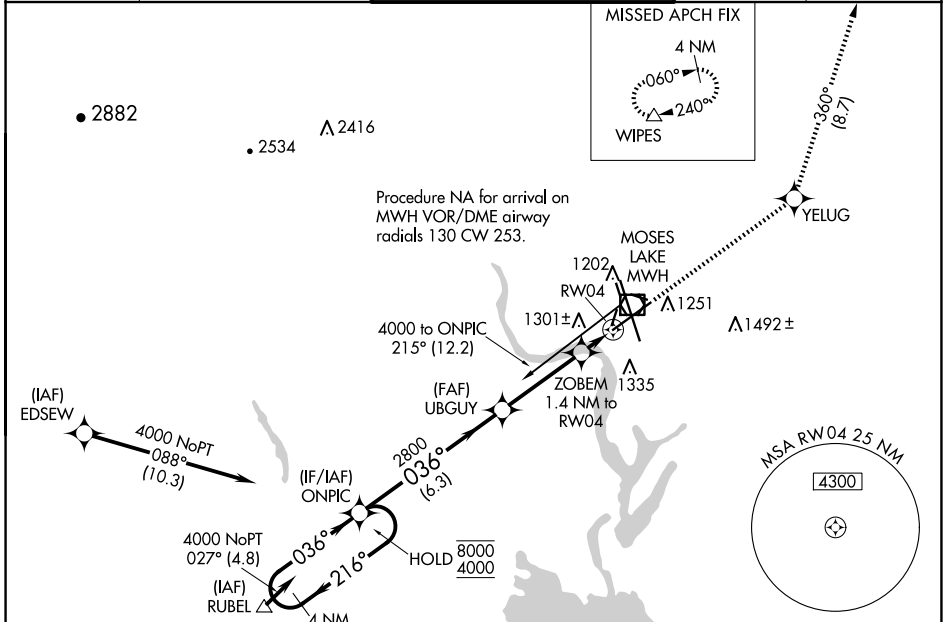
GRANT COUNTY INTL (MWH)

RNP APCH-GPS.

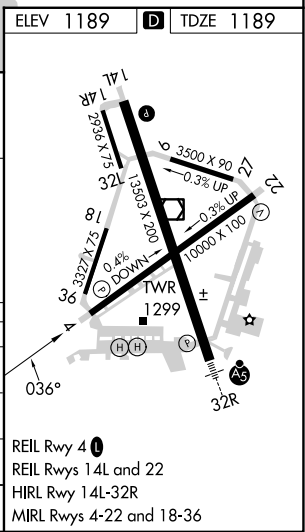
⚠ Circling Rwy 9/27, 18/36 NA at night. For uncompensated Baro-VNAV systems, LNAV/VNAV NA below -15°C or above 54°C.

MISSED APPROACH: Climb to 4000 direct YELUG and on track 360° to WIPES and hold.

ATIS 119.05	GRANT COUNTY APP CON ★ 126.4 379.95	GRANT COUNTY TOWER ★ 118.25 (CTAF) 0 257.8 (EAST) 128.0 257.8 (WEST)	GND CON 121.9	UNICOM 122.95
-----------------------	---	---	-------------------------	-------------------------



	4 NM Holding Pattern	ONPIC	UBGUY	4000	YELUG	tr 360°	WIPES
	8000 ← 216°	036° →	2800		ZOBEM 1.4 NM to RW04		
	4000		2800		1680		
	GP 3.00° TCH 50						
		6.3 NM	3.5 NM	1.4 NM			
CATEGORY	A	B	C	D			
LPV DA		1389-¾	200 (200-¾)				
LNAV/VNAV DA		1461-7/8	272 (300-7/8)				
LNAV MDA		1560-1	371 (400-1)				
C CIRCLING	1660-1	471 (500-1)	1680-1½ 491 (500-1½)	1820-2 631 (700-2)			



NW-1, 15 MAY 2025 to 12 JUN 2025

NW-1, 15 MAY 2025 to 12 JUN 2025