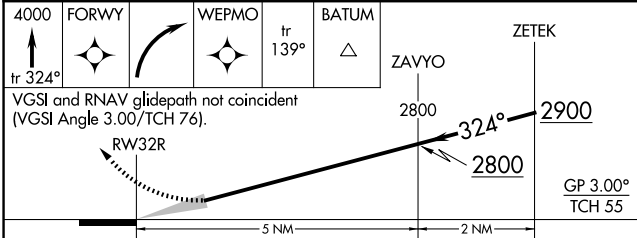
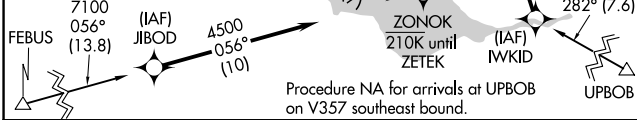
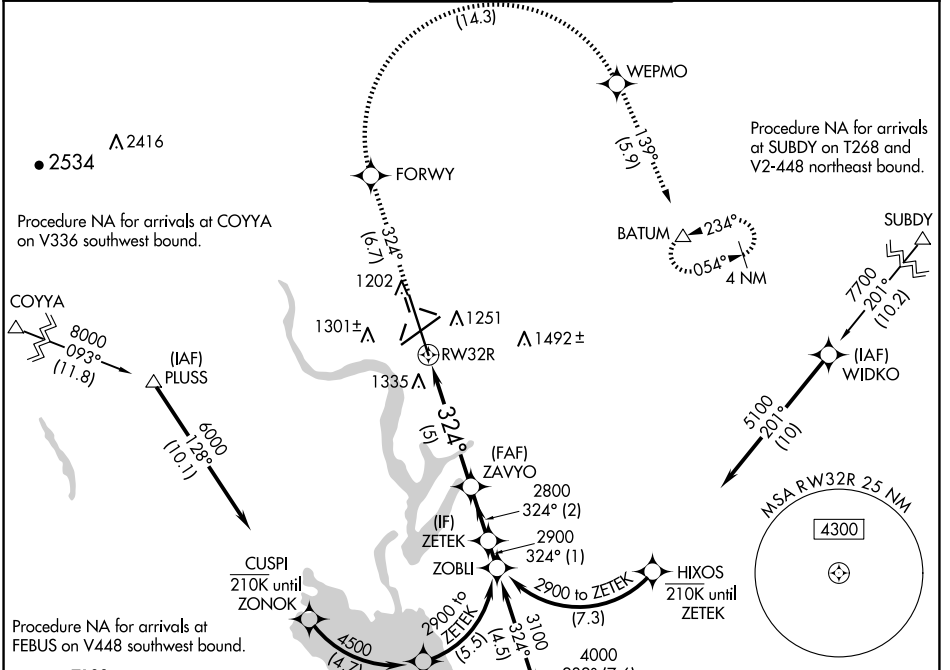


| | | |
|-------------|----------|--------------|
| APP CRS | Rwy ldg | 13492 |
| 324° | TDZE | 1167 |
| | Apt Elev | 1189 |

RNAV (RNP) Z RWY 32R

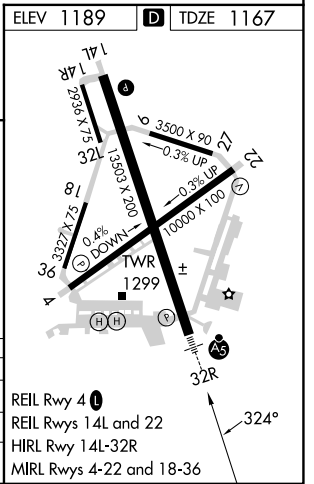
GRANT COUNTY INTL (MWH)

| | | | | |
|---|------------------------|--|---|---------------|
| RNP AR APCH-GPS. | | MALSR | MISSED APPROACH: Climb to 4000 on track 324° to FORWY right turn to WEPMO and track 139° to BATUM and hold. | |
| <p>⚠ For uncompensated Baro-VNAV systems, procedure NA below -15°C or above 54°C. For inoperative ALS increase RNP 0.10 visibility all Cats to RVR 4000, increase RNP 0.30 visibility all Cats to RVR 6000.</p> | | | | |
| ATIS | GRANT COUNTY APP CON * | GRANT COUNTY TOWER * | | GND CON |
| 119.05 | 126.4 379.95 | 118.25 (CTAF) 257.8 (EAST) 128.0 257.8 (WEST) | | 121.9 |
| | | | | UNICOM |
| | | | | 122.95 |



| CATEGORY | A | B | C | D |
|-------------|---|---------|-------------|---|
| RNP 0.10 DA | | 1417/24 | 250 (300-½) | |
| RNP 0.30 DA | | 1564/35 | 397 (400-⅔) | |

AUTHORIZATION REQUIRED



NW-1, 15 MAY 2025 to 12 JUN 2025

NW-1, 15 MAY 2025 to 12 JUN 2025