

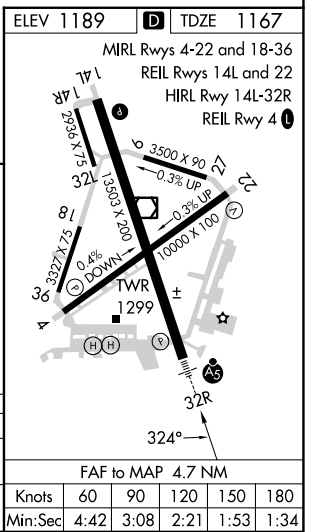
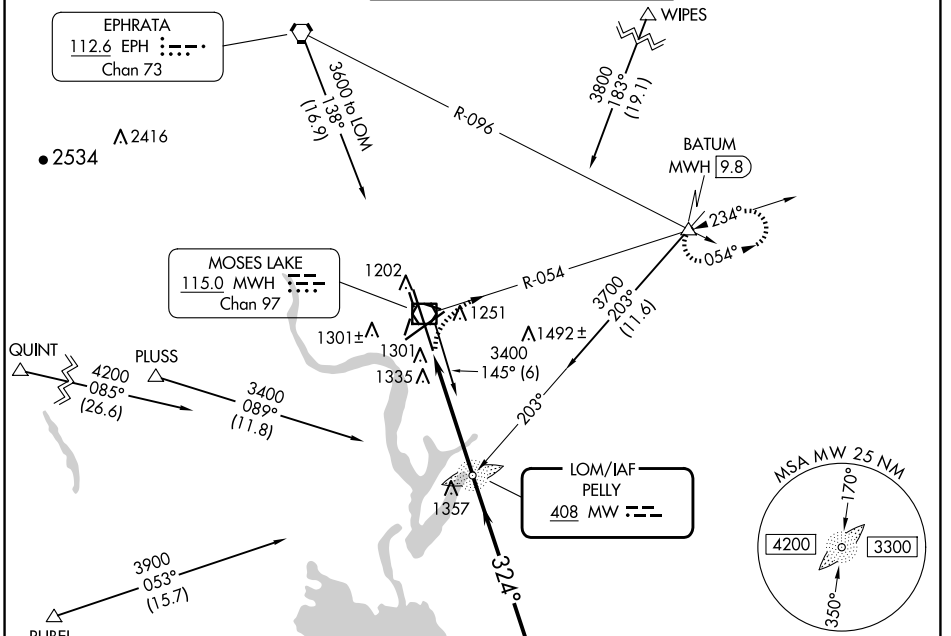
LOM MW <b>408</b>	APP CRS <b>324°</b>	Rwy Idg <b>13492</b>
		TDZE <b>1167</b>
		Apt Elev <b>1189</b>

# NDB RWY 32R

GRANT COUNTY INTL (MWH)

MALSR MISSED APPROACH: Climbing right turn to 4000 via MWH R-054 to BATUM INT/MWH 9.8 DME and hold.	
--	--

ATIS <b>119.05</b>	GRANT COUNTY APP CON * <b>126.4 379.95</b>	GRANT COUNTY TOWER * <b>118.25 (CTAF) 257.8 (EAST)</b> <b>128.0 257.8 (WEST)</b>	GND CON <b>121.9</b>	UNICOM <b>122.95</b>
-----------------------	---	--	-------------------------	-------------------------



CATEGORY	A	B	C	D
S-32R	1680/40	513 (500-¾)	1680/50 513 (500-1)	1680-1½ 513 (500-1½)
CIRCLING	1680-1	491 (500-1)	1680-1½ 491 (500-1½)	1820-2 631 (700-2)

NW-1, 15 MAY 2025 to 12 JUN 2025

NW-1, 15 MAY 2025 to 12 JUN 2025