

WAAS CH 77545 W33A	APP CRS 328°	Rwy ldg TDZE Apt Elev	5498 1047 1051
--	------------------------	-----------------------------	---

RNAV (GPS) RWY 33

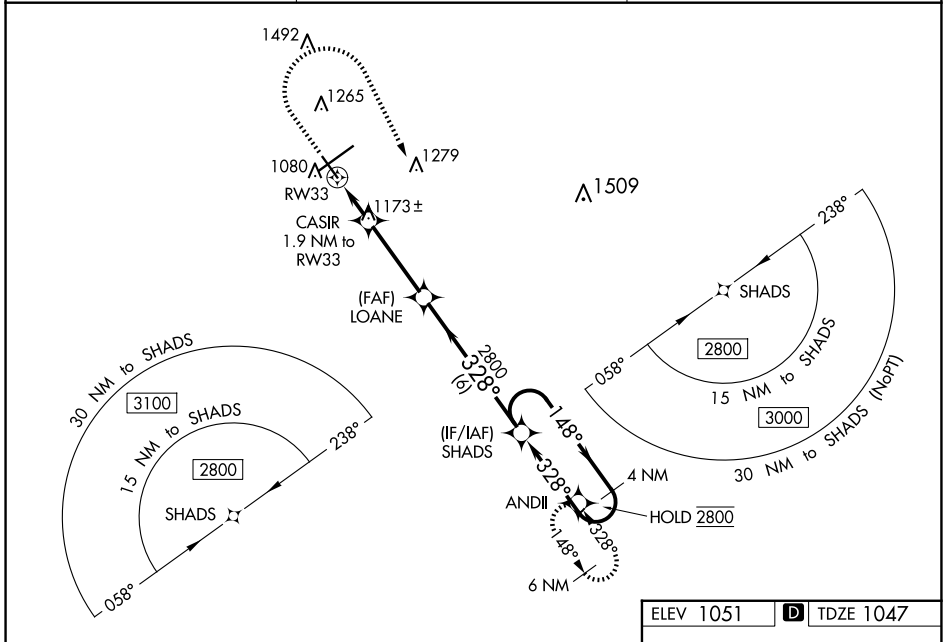
SPRINGFIELD/BECKLEY MUNI (SGH)

RNP APCH - GPS.

⚠ Rwy 33 helicopter visibility reduction below 3/4 SM NA. For uncompensated Baro-VNAV systems, LNAV/VNAV NA below -17°C or above 54°C.

MISSED APPROACH: Climb to 1600 then climbing right turn to 3000 direct ANDII and hold.

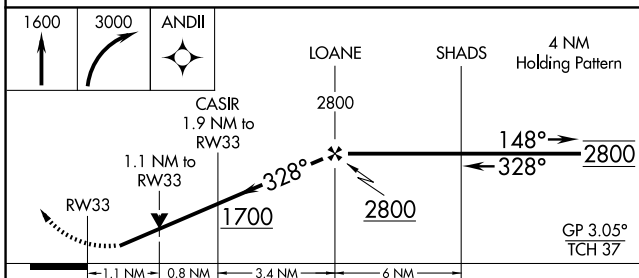
AWOS-3PT 134.975	COLUMBUS APP CON 118.85 269.275	UNICOM 122.95 (CTAF) 0
----------------------------	---	----------------------------------



EC-2, 15 MAY 2025 to 12 JUN 2025

EC-2, 15 MAY 2025 to 12 JUN 2025

ELEV 1051	D TDZE 1047
-----------	--------------------



CATEGORY	A	B	C	D
LPV DA		1349-7/8	302 (300-7/8)	
LNAV/VNAV DA		1350-7/8	303 (300-7/8)	
LNAV MDA	1440-1	393 (400-1)	1440-1 1/8	393 (400-1 1/8)
C CIRCLING	1480-1 429 (500-1)	1580-1 529 (600-1)	1580-1 1/2 529 (600-1 1/2)	1620-2 569 (600-2)

