

EASTOVER, SOUTH CAROLINA

HI-TACAN RWY 32

MC ENTIRE JNGB (KMMT)

VORTAC MMT 113.2 Chan 79	APCH CRS 328°	Rwy ldg TDZE Arpt Elev 9012 243 254
--	-------------------------	---

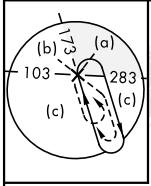
[USAF]

⚠ * When ALS inop, increase CAT CDE RVR 60, vis to 1½ miles.

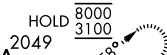


† MISSED APPROACH: Climb to 1100 direct MORRL/1 DME then climbing right turn to 3100 intercept MMT R-058 direct JOGSA/12 DME and hold.

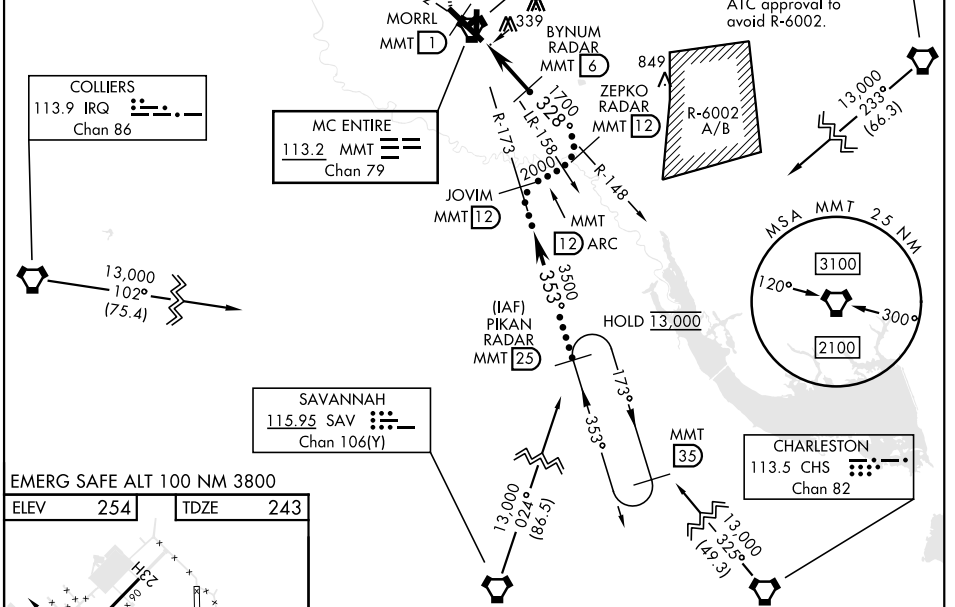
ATIS ★ 327.05	SHAW APP CON 125.4 318.1	TOWER ★ 132.4 (CTAF) 253.5	GND CON 127.625 226.675
-------------------------	------------------------------------	--------------------------------------	-----------------------------------



Remain within 4 NM of MMT to avoid R6001, if unable expect 10 min delay for deactivation R-6001B

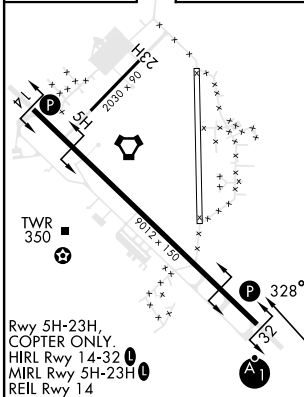


† Published missed approach requires deactivation of R-6001A/B.

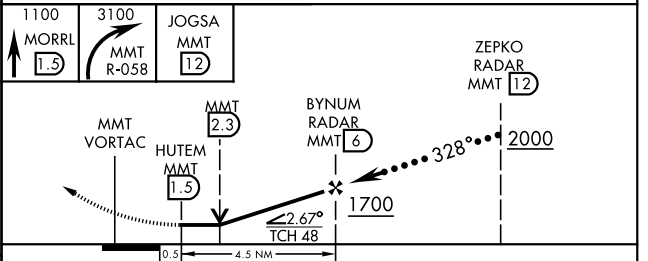


EMERG SAFE ALT 100 NM 3800

ELEV	254	TDZE	243
------	-----	------	-----



Rwy 5H-23H, COPTER ONLY.
HIRL Rwy 14-32
MIRL Rwy 5H-23H
REIL Rwy 14



CATEGORY	C	D	E
S-32 *	640/40	397 (400-¾)	
CIRCLING	880-1¾ 626 (700-1¾)	940-2½ 686 (700-2½)	1020-2¾ 766 (800-2¾)

EASTOVER, SOUTH CAROLINA
Amdt 4 25MAY17

33°55'N-80°48'W

MC ENTIRE JNGB (KMMT)

HI-TACAN RWY 32

SE-2, 15 MAY 2025 to 12 JUN 2025

SE-2, 15 MAY 2025 to 12 JUN 2025