

EASTOVER, SOUTH CAROLINA

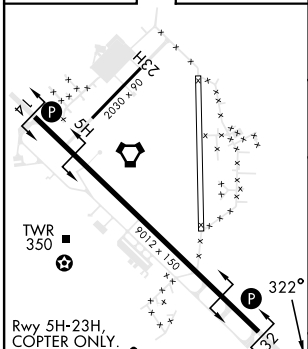
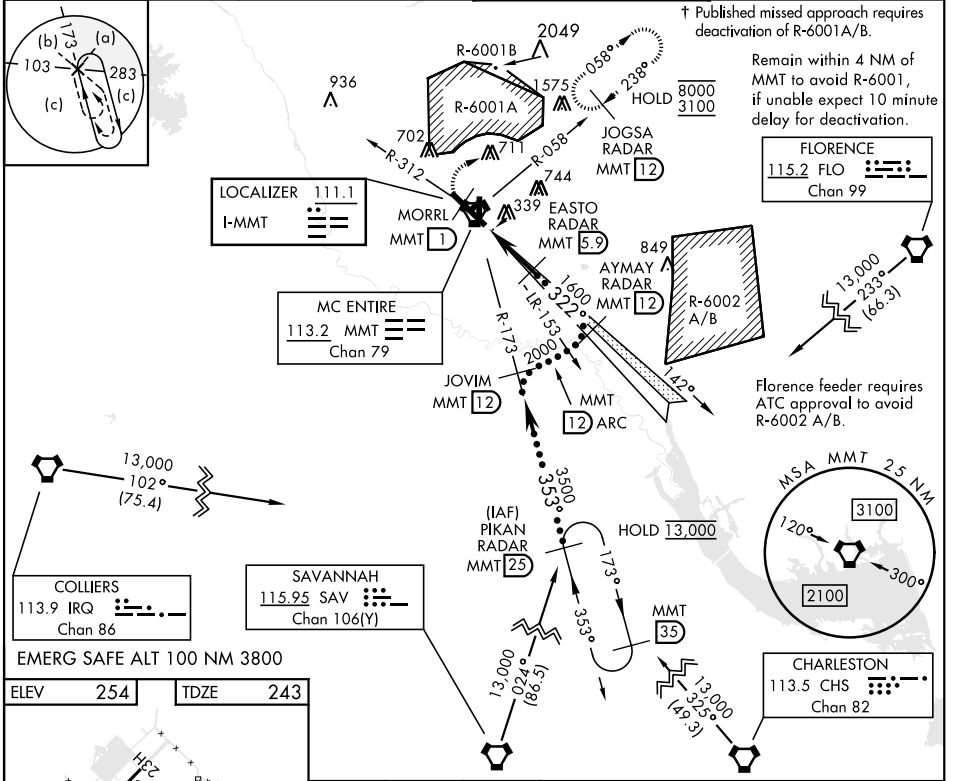
# HI-ILS or LOC/DME RWY 32

LOC I-MMT <b>111.1</b>	APCH CRS <b>322°</b>	Rwy ldg TDZE Arprt Elev <b>9012</b> <b>243</b> <b>254</b>	[USAF]	MC ENTIRE JNGB (KMMT)
---------------------------	-------------------------	--	--------	-----------------------

V \*When ALS inop, increase CAT CDE RVR to 40, vis to 3/4 mile.  
 \*\*When ALS inop, increase CAT C RVR to 55, vis to 1 mile.

A1 † MISSED APPROACH: Climb to 1100 direct MORRL/  
 1 DME then climbing right turn to 3100 intercept  
 MMT R-058 direct JOGSA/12 DME and hold.

ATIS ★ <b>327.05</b>	SHAW APP CON <b>125.4 318.1</b>	TOWER★ <b>132.4 (CTAF) 0 253.5</b>	GND CON <b>127.625 226.675</b>
-------------------------	------------------------------------	---------------------------------------	-----------------------------------



EASTOVER, SOUTH CAROLINA 33° 55' N-80° 48' W MC ENTIRE JNGB (KMMT)

# HI-ILS or LOC/DME RWY 32

SE-2, 15 MAY 2025 TO 12 JUN 2025

SE-2, 15 MAY 2025 TO 12 JUN 2025