

WAAS CH <b>49120</b> <b>W33A</b>	APP CRS <b>329°</b>	Rwy Idg TDZE <b>89</b> Apt Elev <b>99</b>	<b>5186</b>
--	------------------------	---	-------------

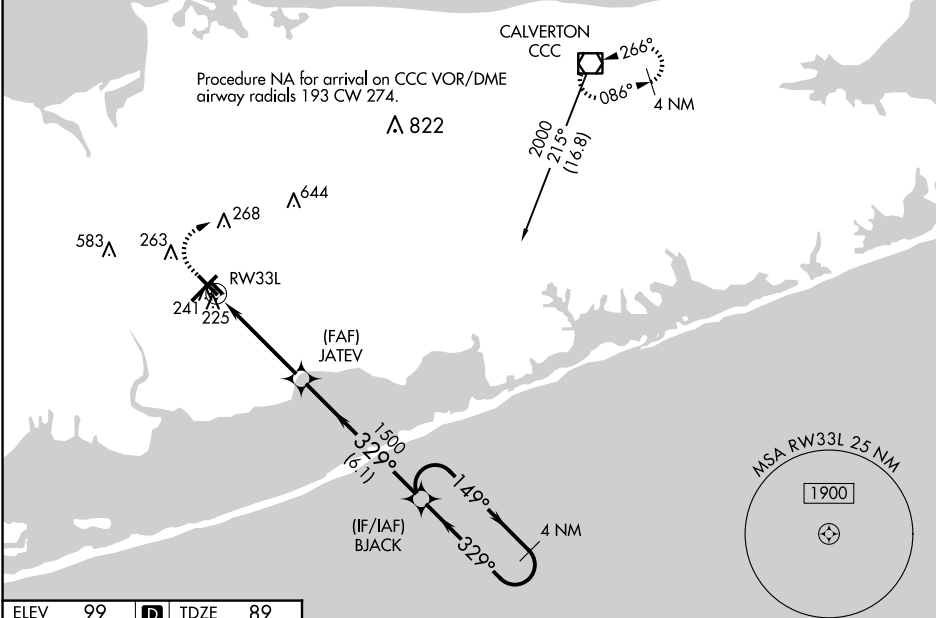
# RNAV (GPS) RWY 33L

LONG ISLAND MAC ARTHUR (ISP)

**⚠** For uncompensated Baro-VNAV systems, LNAV/VNAV NA below -1.4°C (7°F) or above 54°C (130°F).  
**⚠** DME/DME RNP-0.3 NA. When local altimeter setting not received, use Shirley altimeter setting and increase LPV DA to 367 feet, LNAV/VNAV DA to 440 feet and LPV and LNAV/VNAV visibility all Cats 1/8 mile, all MDA 40 feet, increase LNAV Cats C/D visibility 1/8 mile, and Circling Cats C/D visibility 1/4 mile. VDP and Baro-VNAV NA when using Shirley altimeter setting. Helicopter visibility reduction below 3/4 SM NA.

**MISSED APPROACH:**  
 Climb to 600 then climbing right turn to 2000 direct CCC VOR/DME and hold.

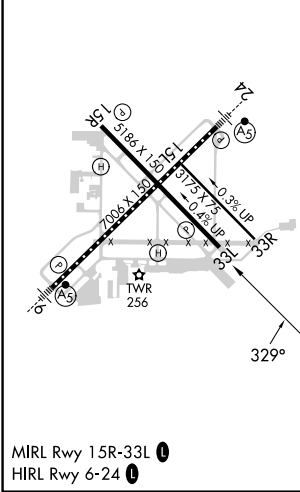
ATIS <b>120.725</b>	NEW YORK APP CON <b>120.05 343.75</b>	LONG ISLAND TOWER* <b>119.3 (CTAF) 0335.5</b>	GND CON <b>135.3</b>	CLNC DEL <b>121.85</b>	UNICOM <b>122.95</b>
------------------------	--	--	-------------------------	---------------------------	-------------------------



NE-2, 15 MAY 2025 to 12 JUN 2025

NE-2, 15 MAY 2025 to 12 JUN 2025

ELEV 99	<b>D</b>	TDZE 89
---------	----------	---------



600	2000	CCC	VGSi and RNAV glidepath not coincident (VGSi Angle 3.00/TCH 50).	
* LNAV only.		* 1.1 NM to RWY 33L		4 NM Holding Pattern
RWY 33L		JATEV 1500	149° →	2000
		← 329°	GP 3.00° TCH 45	
1.1		3.2 NM	6.1 NM	
CATEGORY	A	B	C	D
LPV DA		339-7/8	250 (300-7/8)	
LNAV/VNAV DA		412-1/8	323 (400-1/8)	
LNAV MDA	500-1	411 (500-1)	500-1/4	411 (500-1/4)
<b>C</b> CIRCLING	600-1 501 (600-1)	660-1 561 (600-1)	660-1/2 561 (600-1/2)	960-2 3/4 861 (900-2 3/4)