


| | | |
|--|------------------------|---|
| WAAS CH 90199 W28A | APP CRS 288° | Rwy Idg TDZE 341 Apt Elev 342 |
|--|------------------------|---|

RNAV (GPS) RWY 28

CAPE GIRARDEAU RGNL (CGI)

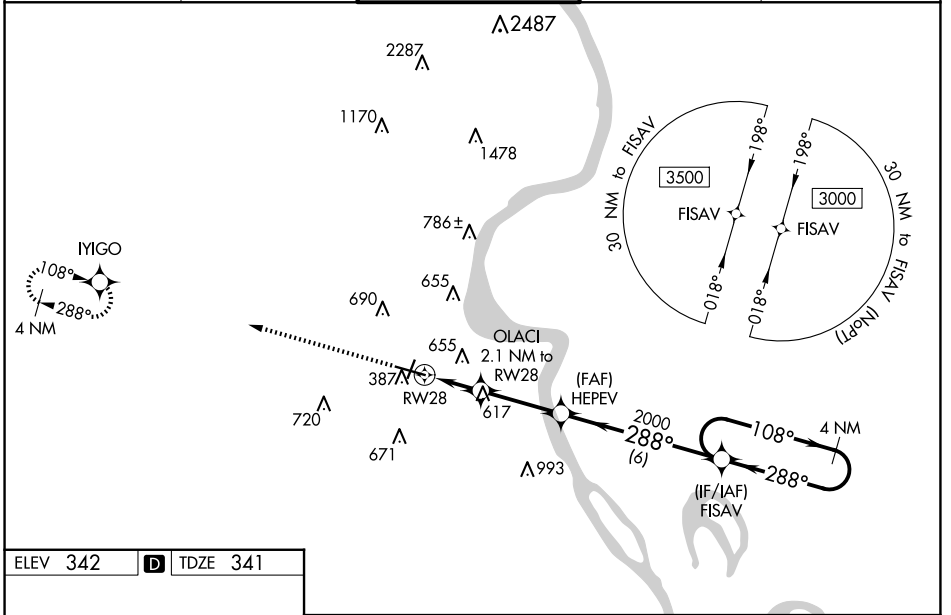
RNP APCH - GPS.

⚠ When local altimeter setting not received, use Cairo altimeter setting and increase LPV DA to 771 feet and all visibilities 1/2 SM. Increase LNAV/VNAV DA to 896 feet; increase all MDAs 60 feet and LNAV and Circling visibility Cats C/D 1/4 SM. VDP NA when using Cairo Rgnl altimeter setting. Rwy 28 helicopter visibility reduction below 3/4 SM NA. For inop ALS, increase LPV Cat A/B visibility to 1 1/2 SM. Inop table does not apply to LNAV/VNAV all Cats. For inop ALS when using Cairo altimeter setting, increase LPV Cat A/B visibility to 1 1/2 SM. Baro-VNAV NA.

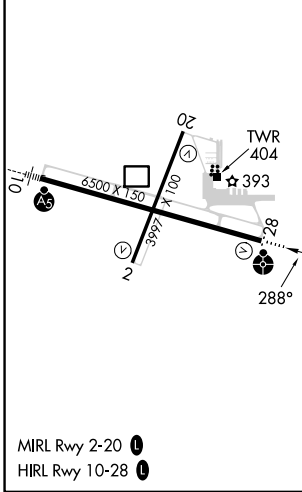
ODALS 

MISSED APPROACH:
Climb to 3000 direct IYIGO and hold.

| | | | | |
|-----------------------|--|---|-------------------------|-------------------------|
| ASOS 120.55 | MEMPHIS CENTER 133.65 292.15 | CAPE GIRARDEAU TOWER * 125.525 (CTAF)  | GND CON 124.7 | UNICOM 122.95 |
|-----------------------|--|---|-------------------------|-------------------------|



| | | |
|-----------------|----------|-----------------|
| ELEV 342 | D | TDZE 341 |
|-----------------|----------|-----------------|



| | | | | |
|-------------------|-------------------------|----------------------|-------------------------------|-------------------------------|
| | 3000 IYIGO | HEPEV | FISAV | 4 NM Holding Pattern |
| | OLACI 2.1 NM to RWY 28 | 2000 | 108° → 3000 | ← 288° |
| | RWY 28 1.6 NM to RWY 28 | 1040 | 288° | GP 3.00° |
| | 1.6 NM | 0.5 NM | 3 NM | 6 NM |
| CATEGORY | A | B | C | D |
| LPV DA | 723-1 | | 382 (400-1) | |
| LNAV/VNAV DA | 848-1 3/8 | | 507 (600-1 3/8) | |
| LNAV MDA | 880-3/4 | 539 (600-3/4) | 880-1 3/8 | 539 (600-1 3/8) |
| C CIRCLING | 880-1 538 (600-1) | 960-1 618 (700-1) | 1000-1 3/4 658 (700-1 3/4) | 1080-2 1/4 738 (800-2 1/4) |

NC-3, 15 MAY 2025 to 12 JUN 2025

NC-3, 15 MAY 2025 to 12 JUN 2025