

WAAS CH 42832 RWY W20A	APP CRS 203°	Rwy Idg TDZE Apt Elev	3997 339 342
--	------------------------	-----------------------------	---

RNAV (GPS) RWY 20

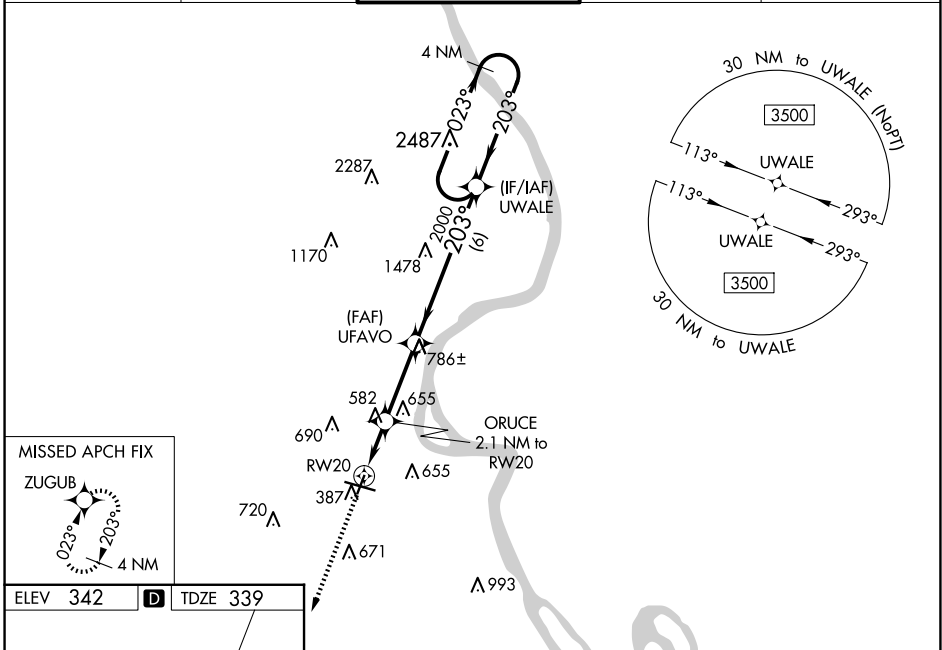
CAPE GIRARDEAU RGNL (CGI)

RNP APCH-GPS.

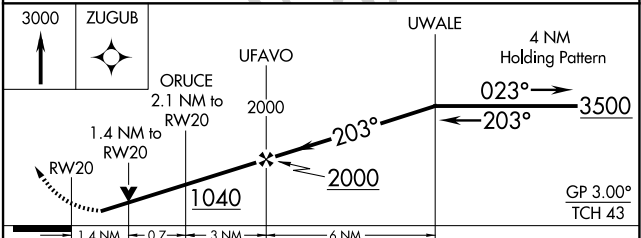
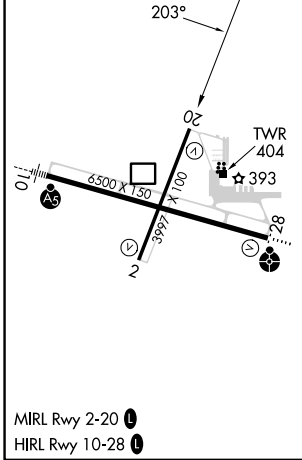
⚠ For uncompensated Baro-VNAV systems, LNAV/VNAV NA below -17°C or above 54°C.
⚠ When local altimeter setting not received, use Cairo altimeter setting and increase LPV DA to 637 feet and all visibilities $\frac{1}{8}$ SM; increase LNAV/VNAV DA to 652 feet; increase all MDAs 60 feet; increase LNAV and Circling visibility Cats C and D $\frac{1}{4}$ SM. Rwy 20 helicopter visibility reduction below $\frac{3}{4}$ SM NA. Baro-VNAV and VDP NA when using Cairo altimeter setting.

MISSED APPROACH: Climb to 3000 direct ZUGUB and hold.

ASOS 120.55	MEMPHIS CENTER 133.65 292.15	CAPE GIRARDEAU TOWER * 125.525 (CTAF) Ⓛ	GND CON 124.7	UNICOM 122.95
-----------------------	--	--	-------------------------	-------------------------



ELEV 342	D	TDZE 339
-----------------	----------	-----------------



CATEGORY	A	B	C	D
LPV DA		589-1	250 (300-1)	
LNAV/VNAV DA		604-1	265 (300-1)	
LNAV MDA	840-1	501 (500-1)	840- $\frac{1}{8}$	501 (500- $\frac{1}{8}$)
C CIRCLING	860-1 518 (600-1)	960-1 618 (700-1)	1000- $\frac{1}{4}$ 658 (700- $\frac{1}{4}$)	1080- $\frac{1}{2}$ 738 (800- $\frac{1}{2}$)

NC-3, 15 MAY 2025 to 12 JUN 2025

NC-3, 15 MAY 2025 to 12 JUN 2025