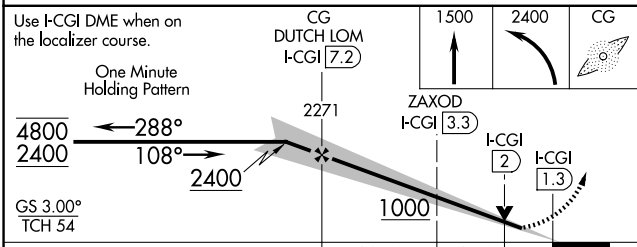
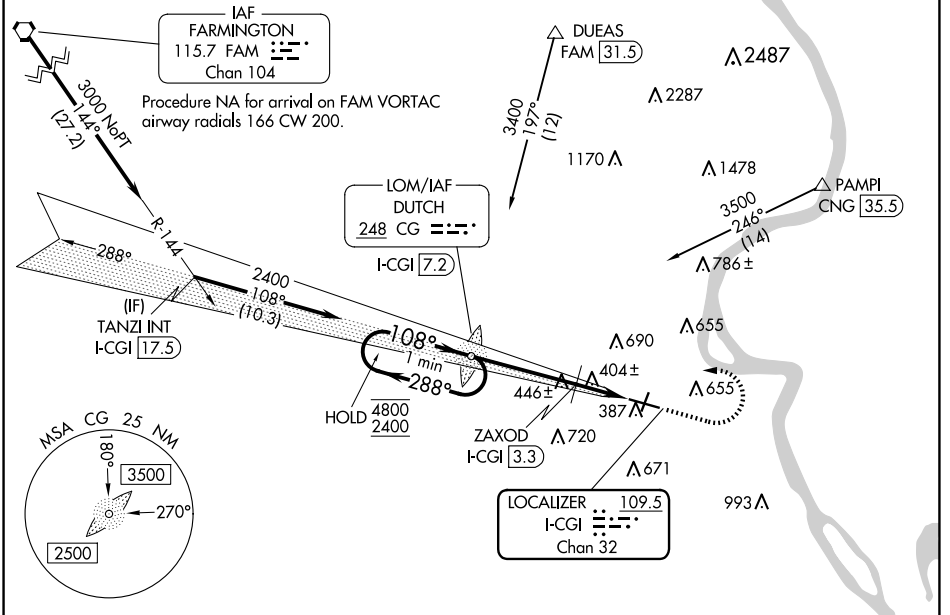


LOC/DME I-CGI	APP CRS	Rwy Idg	6500
<b>109.5</b>	<b>108°</b>	TDZE	<b>337</b>
Chan <b>32</b>		Apt Elev	<b>342</b>

# ILS or LOC RWY 10

CAPE GIRARDEAU RGNL (CGI)

ADF required.		MALSR		MISSED APPROACH: Climb to 1500 then climbing left turn to 2400 direct DUTCH LOM/I-CGI 7.2 DME and hold.	
<p>▼ For inop ALS, increase S-LOC 10 Cat C/D visibility to 1 1/2 SM.</p> <p>▲</p>					
ASOS	MEMPHIS CENTER	CAPE GIRARDEAU TOWER ★	GND CON	UNICOM	
<b>120.55</b>	<b>133.65 292.15</b>	<b>125.525 (CTAF) 1</b>	<b>124.7</b>	<b>122.95</b>	



ELEV 342	TDZE 337
MIRL Rwy 2-20	
HIRL Rwy 10-28	
FAF to MAP 5.9 NM	
Knots	60 90 120 150 180
Min:Sec	5:54 3:56 2:57 2:22 1:58

CATEGORY	A	B	C	D
S-ILS 10		537-1/2	200 (200-1/2)	
S-LOC 10	1000-1/2	663 (700-1/2)	1000-1 1/2	663 (700-1 1/2)
CIRCLING	1000-1	658 (700-1)	1000-1 7/8 658 (700-1 7/8)	1080-2 1/4 738 (800-2 1/4)
ZAXOD FIX MINIMUMS				
S-LOC 10		660-1/2	323 (400-1/2)	
CIRCLING	880-1 538 (600-1)	960-1 618 (700-1)	1000-1 3/4 658 (700-1 3/4)	1080-2 1/4 738 (800-2 1/4)

NC-3, 15 MAY 2025 to 12 JUN 2025

NC-3, 15 MAY 2025 to 12 JUN 2025