

KINGSVILLE, TEXAS

ILS Z or LOC Z RWY 13R

LOC/DME I-NQI 110.9 Chan 46	APCH CRS 130°	Rwy Idg TDZE Arprt Elev 8000 50 50
---	-------------------------	--

[USN]

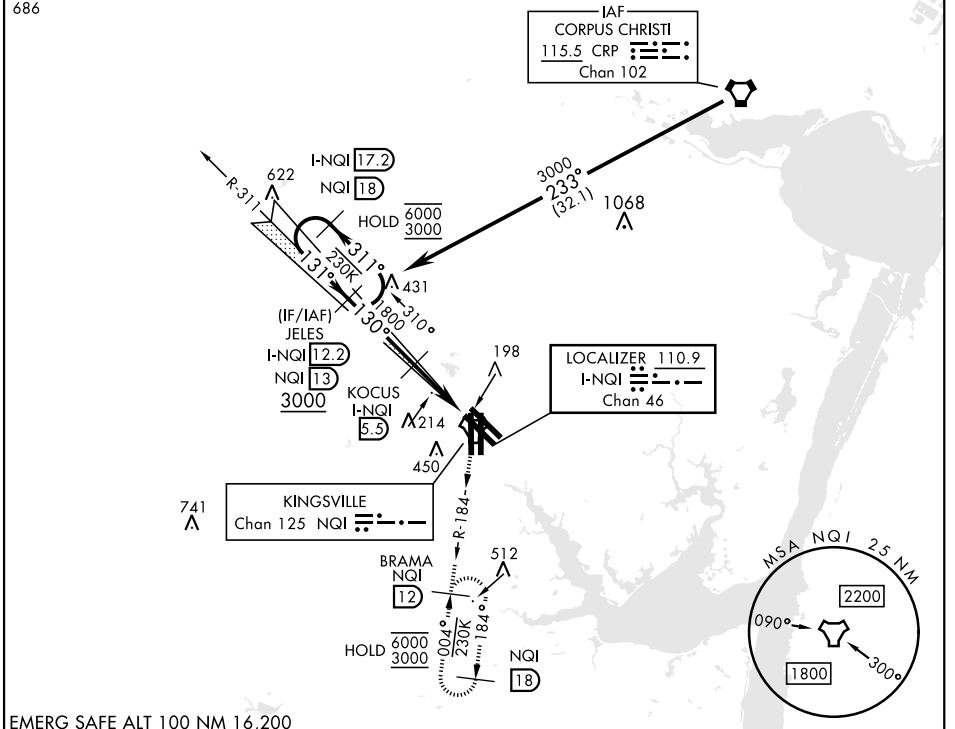
KINGSVILLE NAS (KNQI)

TACAN required

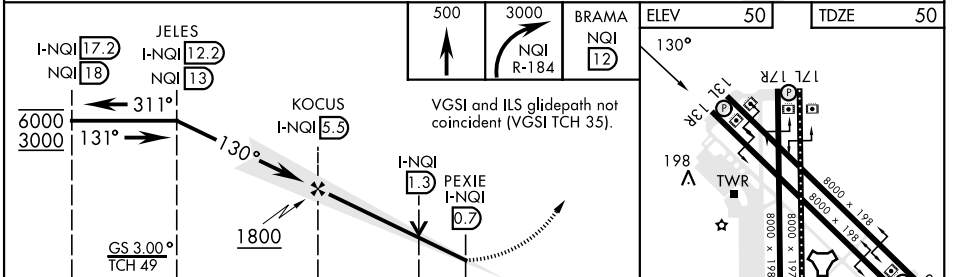
▼

MISSED APPROACH: Climb to 500 then climbing right turn to 3000 and intercept NQI TACAN R-184 to BRAMA and hold.

ATIS ★ 282.25	APP CON 119.9 290.45	TOWER ★ 124.1 377.05	GND CON 239.05	CLNC DEL 328.4	ASR/PAR
-------------------------	--------------------------------	--------------------------------	--------------------------	--------------------------	---------



EMERG SAFE ALT 100 NM 16,200



CATEGORY	A	B	C	D
S-ILS 13R		250-¾	200	(200-¾)
S-LOC 13R	460-1	410 (500-1)	460-1½	410 (500-1½)
CIRCLING	540-1	490 (500-1)	760-2 710 (800-2)	760-2¼ 710 (800-2¼)

HIRL all rwys
REIL all rwys
TDZL/CL Rwy 17L

▲

KINGSVILLE, TEXAS
Orig 26DEC24

27°30'N-97°49'W

KINGSVILLE NAS (KNQI)

ILS Z or LOC Z RWY 13R

SC-3, 15 MAY 2025 to 12 JUN 2025

SC-3, 15 MAY 2025 to 12 JUN 2025