


LOC/DME I-FNU 110.15 Chan 38 (Y)	APP CRS 275°	Rwy ldg 11002 TDZE 45 Apt Elev 55
--	------------------------	--

ILS or LOC RWY 27R

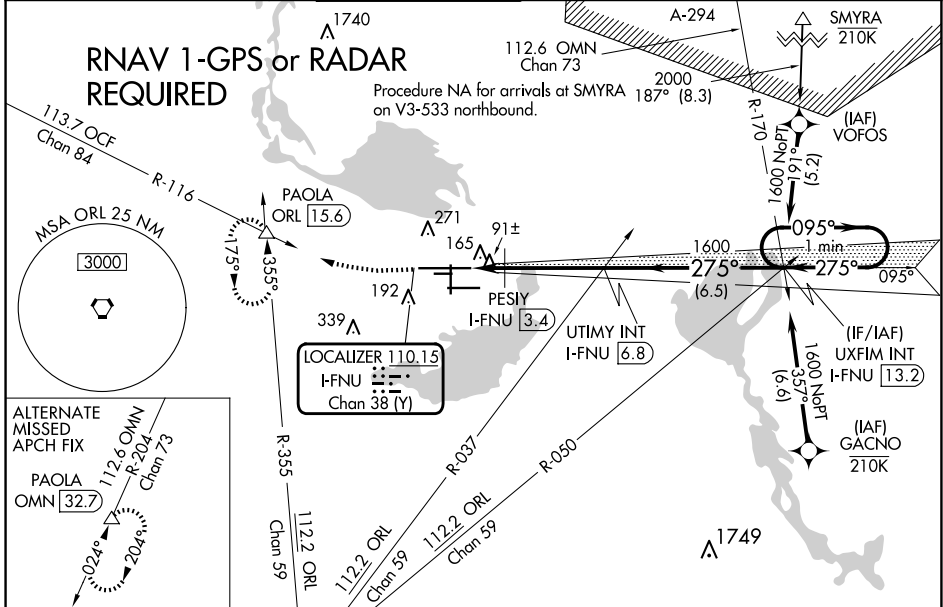
ORLANDO SANFORD INTL (SF'B)

▼ For inop ALS, increase PESIY FIX minimums
▲ Cat C/D visibility to 1 SM.

MALSR 

MISSED APPROACH: Climb to 500 then climbing right turn to 2800 on heading 280° and ORL VORTAC R-355 to PAOLA INT/ORL 15.6 DME and hold, continue climb-in-hold to 2800.

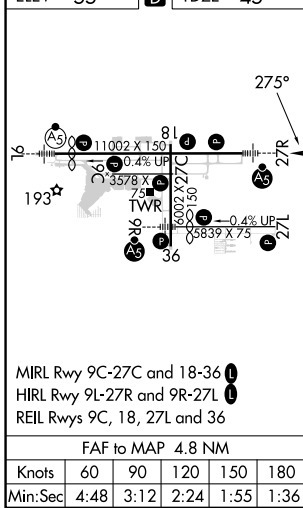
ATIS 125.975	ORLANDO APP CON 135.3 351.9 (NORTH) 119.775 351.9 (SOUTH)	SANFORD TOWER* 120.3 (CTAF) 0 254.35	GND CON 121.35 254.35	CLNC DEL 123.975	CLNC DEL 121.35 (when twr closed)
------------------------	---	---	---------------------------------	----------------------------	--



SE-3, 15 MAY 2025 to 12 JUN 2025

SE-3, 15 MAY 2025 to 12 JUN 2025

ELEV 55	D	TDZE 45	500	2800	PAOLA	VGSI and ILS glidepath not coincident (VGSI Angle 3.00/TCH 72).
---------	----------	---------	-----	------	-------	---



↑	hdg 280°	PAOLA ORL R-355	UTIMY INT I-FNU 6.8	UXFIM INT I-FNU 13.2
*LOC only.				One Minute Holding Pattern
				1600
				275°
				095°
				1600
				GS 3.00° TCH 55
				1.4 NM
				3.4 NM
				6.5 NM

CATEGORY	A	B	C	D
S-ILS 27R	245-1/2 200 (200-1/2)			
S-LOC 27R	480-1/2	435 (500-1/2)	480-3/4	435 (500-3/4)
C CIRCLING	580-1	525 (600-1)	600-1/2	640-2
			545 (600-1/2)	585 (600-2)
PESIY FIX MINIMUMS				
S-LOC 27R	400-1/2	355 (400-1/2)	400-5/8	355 (400-5/8)
C CIRCLING	580-1	525 (600-1)	600-1/2	640-2
			545 (600-1/2)	585 (600-2)