

BEAUFORT, SOUTH CAROLINA

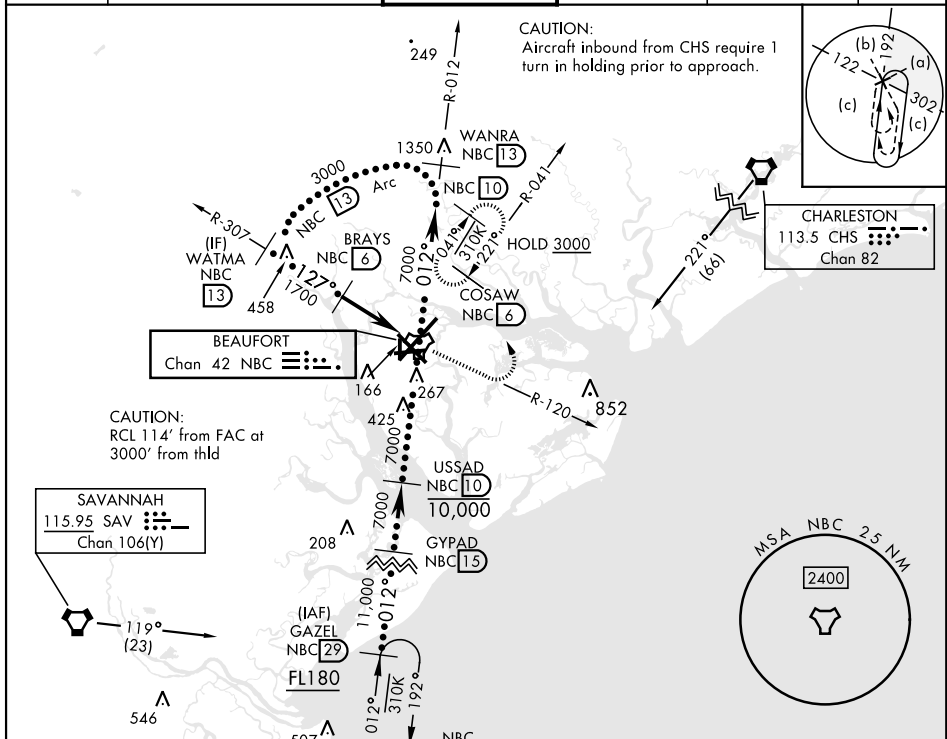
# HI-TACAN Y RWY 14

TACAN NBC Chan <b>42</b>	APCH CRS <b>127°</b>	Rwy ldg TDZE Arpt Elev <b>8000</b> <b>32</b> <b>37</b>	[USN]	BEAUFORT MCAS (MERRITT FLD)	(KNBC)
-----------------------------	-------------------------	---	-------	-----------------------------	--------

RADAR required

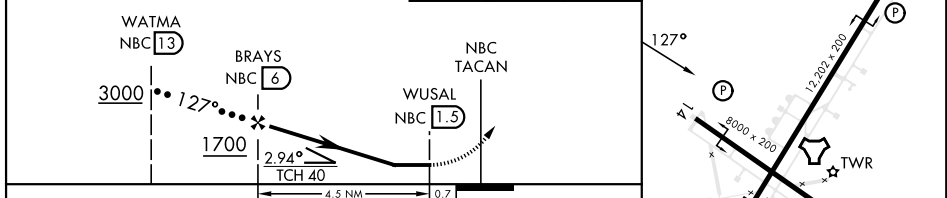
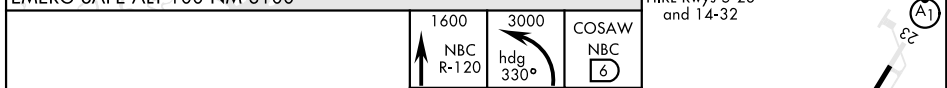
▼ MISSED APPROACH: Climb to 1600 on NBC TACAN R-120, then climbing left turn to 3000 via hdg 330° to intercept NBC R-041 to 6 DME (COSAW) and hold. Continue climb in hold to 3000.

ATIS ★ <b>279.525</b>	APP CON <b>125.125 292.125</b> (ABV 3000) <b>123.7 269.125</b> (3000 and BLW)	TOWER ★ <b>119.05 342.875</b>	GND CON <b>128.15 348.625</b>	CLNC DEL <b>128.15 254.375</b>	ASR/PAR
--------------------------	---	----------------------------------	----------------------------------	-----------------------------------	---------



ELEV <b>37</b>	TDZE <b>32</b>
----------------	----------------

HIRL Rwy 5-23 and 14-32



CATEGORY	C	D	E
S-14	420-1½	388	(400-1½)
CIRCLING	580-1½ 543 (600-1½)	600-2 563 (600-2)	740-2½ 703 (800-2½)

BEAUFORT, SOUTH CAROLINA 32° 29' N-80° 43' W BEAUFORT MCAS (MERRITT FLD) (KNBC)

# HI-TACAN Y RWY 14



SE-2, 15 MAY 2025 to 12 JUN 2025

SE-2, 15 MAY 2025 to 12 JUN 2025

Amdt 4 11JUL24