

RIDGECREST, CALIFORNIA

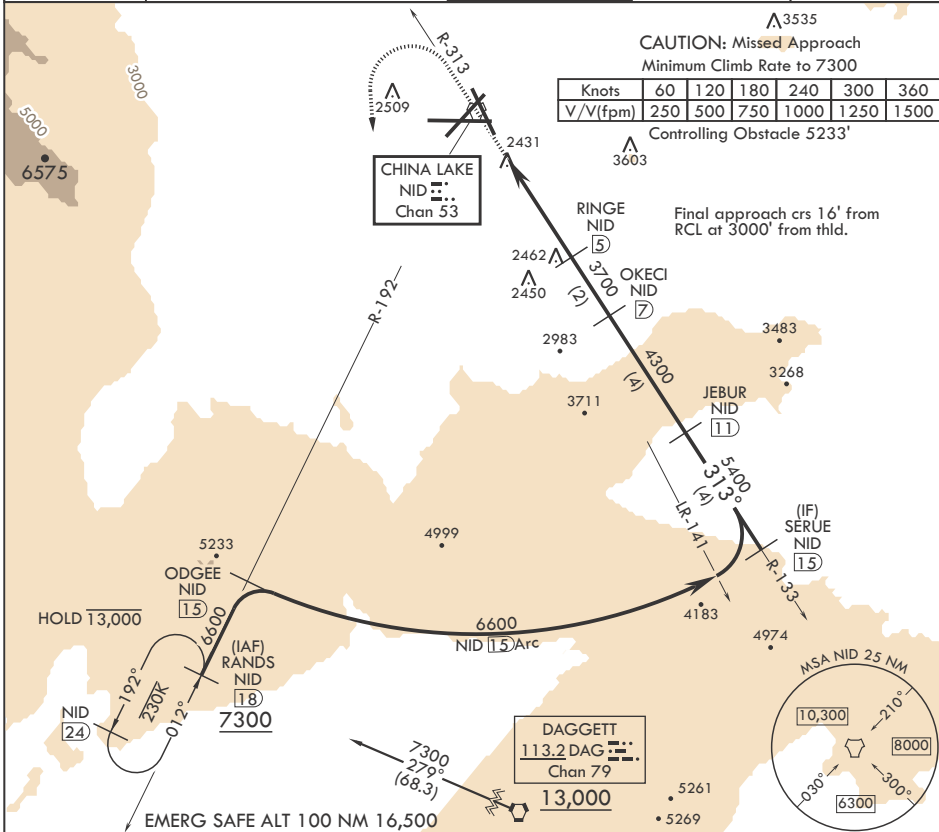
# TACAN RWY 32

TACAN NID Chan 53	APCH CRS 313°	Rwy ldg TDZE Arprt Elev	9013 2241 2288
----------------------	------------------	----------------------------	----------------------

(USN) CHINA LAKE NAWS (ARMITAGE FLD) (KNID)

**MISSED APPROACH:** Climb to 3600 then a climbing left turn to 7300 to intercept China Lake TACAN R-192 to RANDS and hold.

ATIS★ 322.375	JOSHUA APP CON/DEP CON 133.65 348.7	TOWER★ 120.15 340.2	GND CON 350.3	CLNC DEL 254.25
------------------	--	------------------------	------------------	--------------------



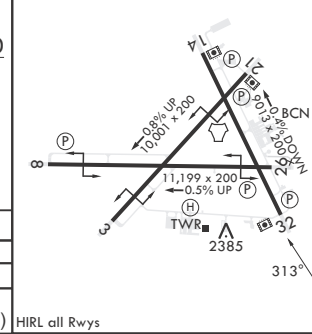
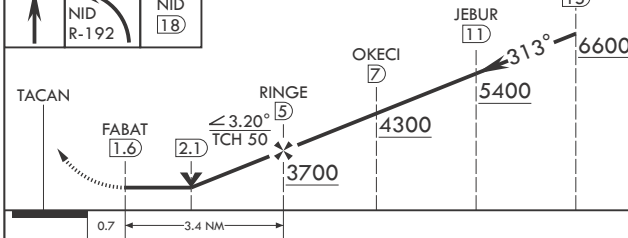
Knots	60	120	180	240	300	360
V/V(fpm)	250	500	750	1000	1250	1500

Controlling Obstacle 5233'

**CAUTION: Missed Approach**  
Minimum Climb Rate to 7300

Final approach crs 16' from RCL at 3000' from thld.

3600	7300	RANDS NID 18	SERUE 15	ELEV 2288	TDZE 2241
------	------	--------------	----------	-----------	-----------



CATEGORY	A	B	C	D
S-32	2720-1	479 (500-1)	2720-1½	479 (500-1½)
CIRCLING	2740-1	2820-1	2820-1½	3500-3
	456 (500-1)	536 (600-1)	536 (600-1½)	1216 (1300-3)

HIRL all Rwys

RIDGECREST, CALIFORNIA 35°41'N - 117°42'W CHINA LAKE NAWS (ARMITAGE FLD) (KNID)

Amdt 5 10SEP20

# TACAN RWY 32

SW-3, 15 MAY 2025 to 12 JUN 2025

SW-3, 15 MAY 2025 to 12 JUN 2025