

ILS Y or LOC/DME Y RWY 24R

LOC/DME I-NKX 111.15 Chan 48 (Y)	APCH CRS 243°	Rwy Idg 8001	24L TDZE 477	24R TDZE 475
TACAN or RADAR required		Arpt Elev 477		

[USN]

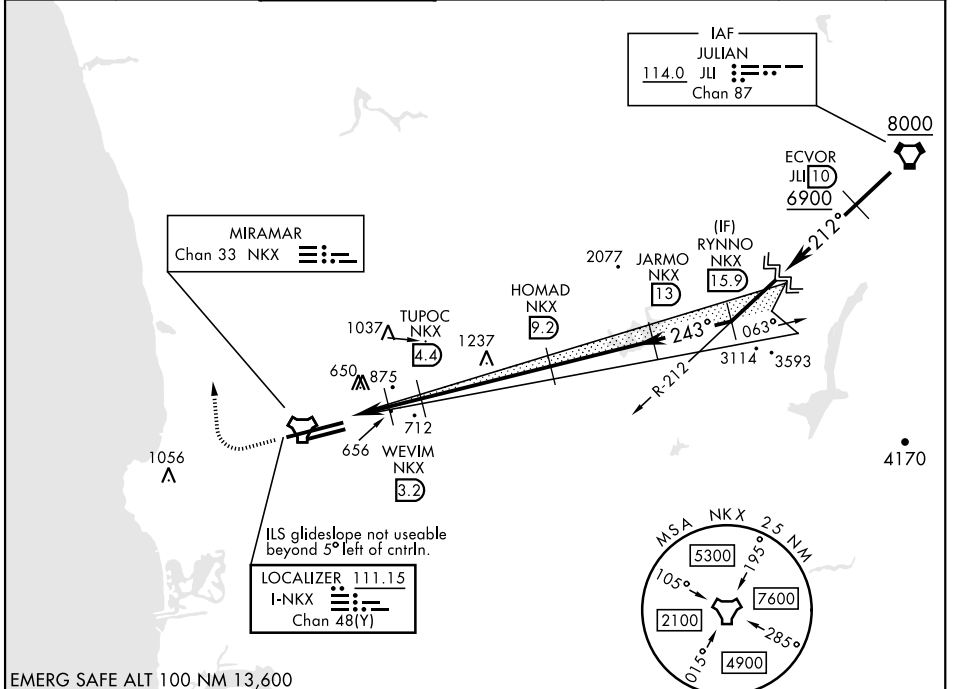
MIRAMAR MCAS (JOE FOSS FLD) (KNKX)

▼ * When ALS inop, increase vis to ¾ mile.
 ** When ALS inop, increase CAT AB vis to 1 mile, CAT CDE vis to 1 ½ miles.
 *** CAT E circling not authorized S of Rwy 6R-24L.

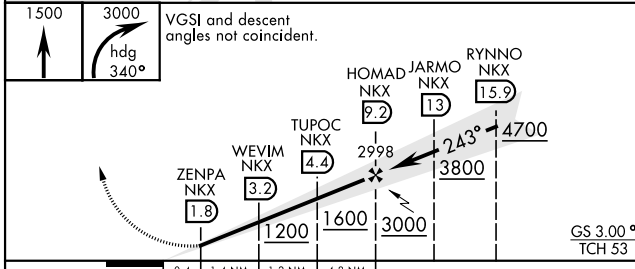


MISSED APPROACH: Climb to 1500, then climbing right turn to 3000 via heading 340°. Expect radar vectors.

ATIS ★ 133.475 352.0	SOCAL APP CON 132.2 269.1	FOSS TOWER ★ 135.2 298.925	GND CON 128.625 307.325	CLNC DEL 125.975 254.325	LA CENTER 291.7	ASR/ PAR
--	---	--	---	--	---------------------------	-------------

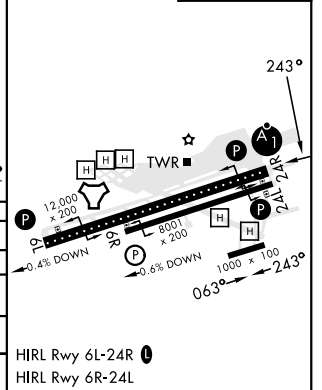


EMERG SAFE ALT 100 NM 13,600



ELEV 477	TDZE 24L 477
	TDZE 24R 475

CATEGORY	A	B	C	D	E
S-ILS 24R*	675 - ½		200	(200-½)	
S-LOC/DME 24R**	920-½	445 (500-½)	920-¾	445 (500-¾)	
SIDESTEP 24L	920-1	443 (500-1)	920-1½ 443 (500-1½)	920-2 443 (500-2)	
CIRCLING***	940-1 463 (500-1)	960-1 483 (500-1)	960-1½ 483 (500-1½)	1180-2¼ 703 (800-2¼)	1360-3 883 (900-3)



ILS Y or LOC/DME Y RWY 24R