

WAAS CH <b>65905</b> <b>W24A</b>	APP CRS <b>244°</b>	Rwy Idg TDZE Apt Elev	<b>6802</b> <b>560</b> <b>569</b>
--	------------------------	-----------------------------	---

# RNAV (GPS) RWY 24

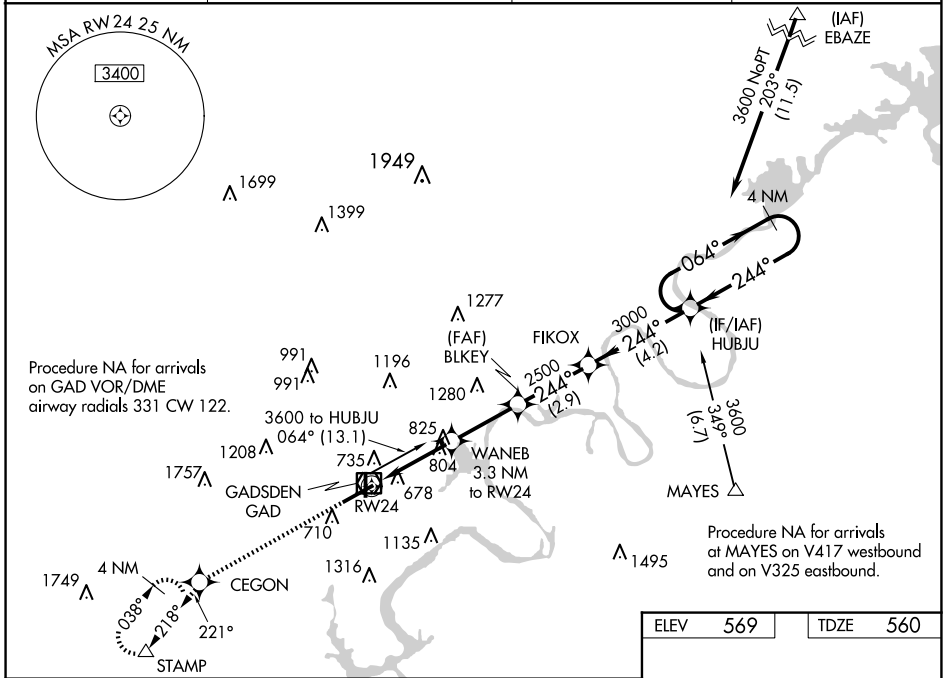
NORTHEAST ALABAMA RGNL (GAD)

RNP APCH-GPS.

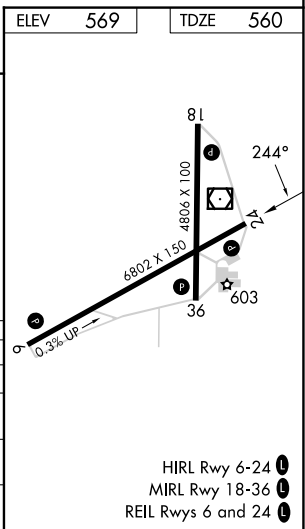
▼ For uncompensated Baro-VNAV systems, LNAV/VNAV NA below -16°C or above 54°C.  
 ▲ When local altimeter setting is not received, use Annonisim altimeter setting and increase LPV DA to 847 feet and all visibilities 1/8 SM; increase LNAV/VNAV DA to 1082 feet and all visibilities 1/8 SM; increase all MDAs 80 feet and LNAV visibility Cat C/D 1/4 SM, and Circling visibility Cat C 1/2 SM. Baro-VNAV and VDP NA when using Annonisim altimeter setting.

MISSED APPROACH: Climb to 3600 direct CEGON and on track 221° to STAMP and hold, continue climb-in-hold to 3600.

AWOS-3PT <b>127.825</b>	BIRMINGHAM APP CON <b>125.45 279.65</b>	CLNC DEL <b>120.05 257.7</b>	UNICOM <b>122.8 (CTAF)</b>
----------------------------	--	---------------------------------	-------------------------------



3600	CEGON	STAMP	HUBJU 4 NM Holding Pattern			
↑	✦	tr 221°	BLKEY	FIKOX	HUBJU	4 NM Holding Pattern
WANE B 3.3 NM to RW24			2500	244°	064° →	3600
RW24 1.7 NM to RW24			1620	2500	← 244°	GP 3.00° TCH 43
1.7 NM			1.6 NM	2.7 NM	2.9 NM	4.2 NM
CATEGORY	A	B	C	D		
LPV DA		781-3/4	221 (300-3/4)			
LNAV/VNAV DA		1016-13/8	456 (500-13/8)			
LNAV MDA	1140-1	580 (600-1)	1140-15/8	580 (600-15/8)		
CIRCLING	1140-1	571 (600-1)	1440-2 1/2 871 (900-2 1/2)	1680-3 1111 (1200-3)		



SE-4, 15 MAY 2025 to 12 JUN 2025

SE-4, 15 MAY 2025 to 12 JUN 2025