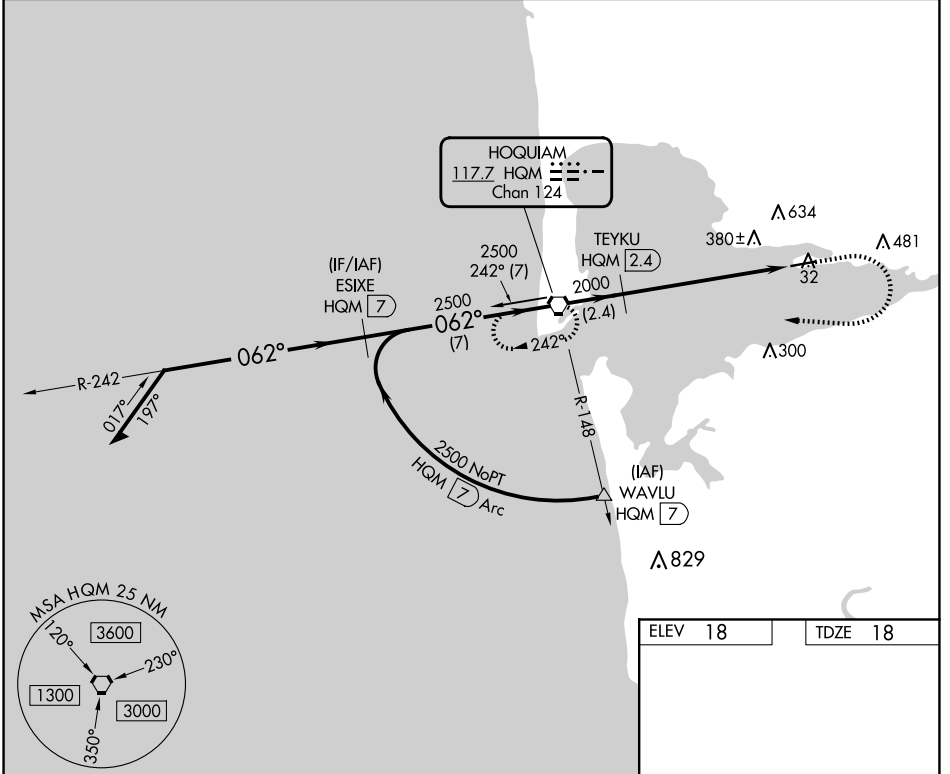


VORTAC HQM 117.7 Chan 124	APP CRS 062°	Rwy Idg TDZE Apt Elev	5000 18 18
---	------------------------	-----------------------------	---------------------------------------

VOR RWY 6
BOWERMAN FLD (HQM)

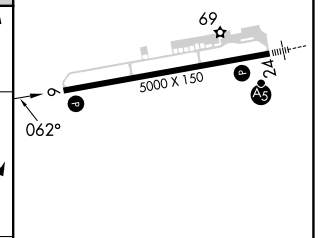
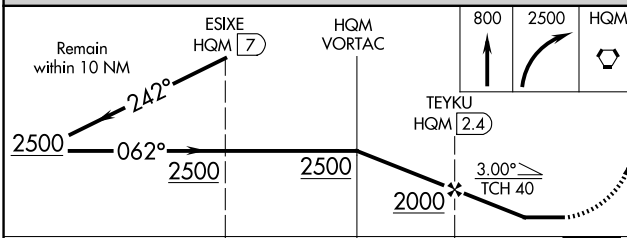
DME required.	MISSED APPROACH: Climb to 800 then climbing right turn 2500 direct HQM VORTAC and hold, continue climb-in-hold to 2500.
---------------	---

ASOS 135.775	SEATTLE CENTER 128.3 269.0	UNICOM 122.7 (CTAF) 0
------------------------	--------------------------------------	---------------------------------



NW-1, 15 MAY 2025 to 12 JUN 2025

NW-1, 15 MAY 2025 to 12 JUN 2025



	ESIXE HQM (7)		HQM VORTAC		800	2500	HQM
	Remain within 10 NM				↑	↷	⬡
	2500		2500		2500		2000
	062°		062°		062°		3.00° TCH 40
	7 NM		2.4 NM		6.1 NM		
CATEGORY	A	B	C		D		
S-6	640-1	622 (700-1)	640-1¾ 622 (700-1¾)				
CIRCLING	640-1	622 (700-1)	800-2¼ 782 (800-2¼)	840-2¾ 822 (900-2¾)			
	REIL Rwy 6 0 HIRL Rwy 6-24 0						
	FAF to MAP 6.1 NM						
	Knots	60	90	120	150	180	
	Min:Sec	6:06	4:04	3:03	2:26	2:02	