

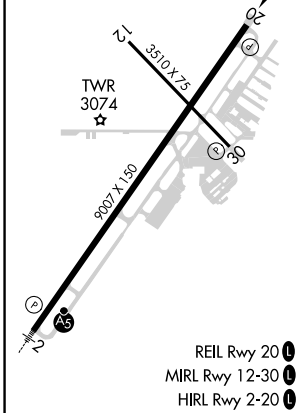
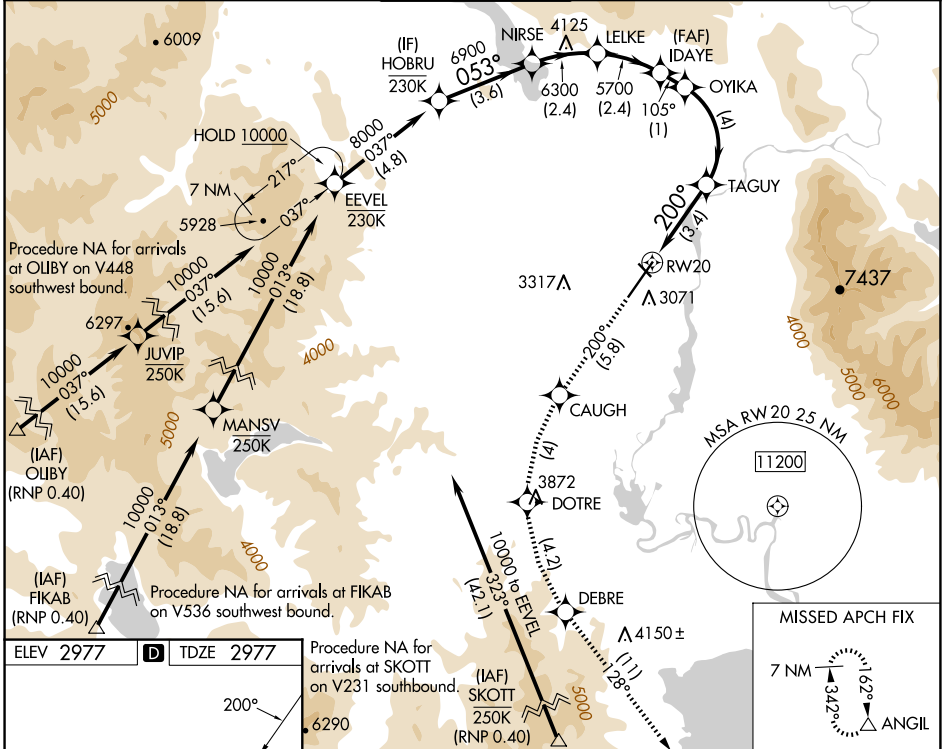
APP CRS	Rwy Idg	9007
200°	TDZE	2977
	Apt Elev	2977

RNAV (RNP) RWY 20

GLACIER PARK INTL (GPI)

RNP AR APCH - GPS.		MISSED APPROACH: Climb to 10000 on track 200° to CAUGH, left turn to DOTRE, left turn to DEBRE, and on track 128° to ANGL and hold, continue climb-in-hold to 10000. *Missed approach requires minimum climb of 230 feet per NM to 6800.	
-15°C For uncompensated Baro-VNAV systems, procedure NA below -25°C or above 54°C.			

ATIS 132.625	SALT LAKE CENTER 127.075 244.875	GLACIER TOWER* 124.55 (CTAF) 0	GND CON 121.6	UNICOM 122.95
------------------------	--	--	-------------------------	-------------------------



10000	CAUGH	DOTRE	DEBRE	tr 128°	ANGIL	HOBRU	
tr 200°							
	TAGUY	OYIKA	IDAYE	LELKE	NIRSE	8000	
	4100	5377	5700	6300	6900		
			105°	5700		GP 3.00°	
						TCH 45	
	3.4 NM	4 NM	1 NM	2.4 NM	2.4 NM	3.6 NM	
CATEGORY	A		B		C		D
RNP 0.10 DA*	3346-1		369 (400-1)				
RNP 0.30 DA*	3418-1 3/8		441 (500-1 3/8)				
RNP 0.30 DA	3637-1 7/8		660 (700-1 7/8)				

AUTHORIZATION REQUIRED

NW-1, 15 MAY 2025 to 12 JUN 2025

NW-1, 15 MAY 2025 to 12 JUN 2025