

(RIDDG1.RIDDG) 23278

RIDDG ONE DEPARTURE (RNAV)

GLACIER PARK INTL (GPI)
KALISPELL, MONTANA
RNAV 1 - GPS.

AL-887 (FAA)

SALT LAKE CENTER
127.075 244.875
ATIS
132.625
GND CON
121.6
GLACIER TOWER *
124.55

**TOP ALTITUDE:
AS ASSIGNED BT ATC**

KECEK
7000 230K

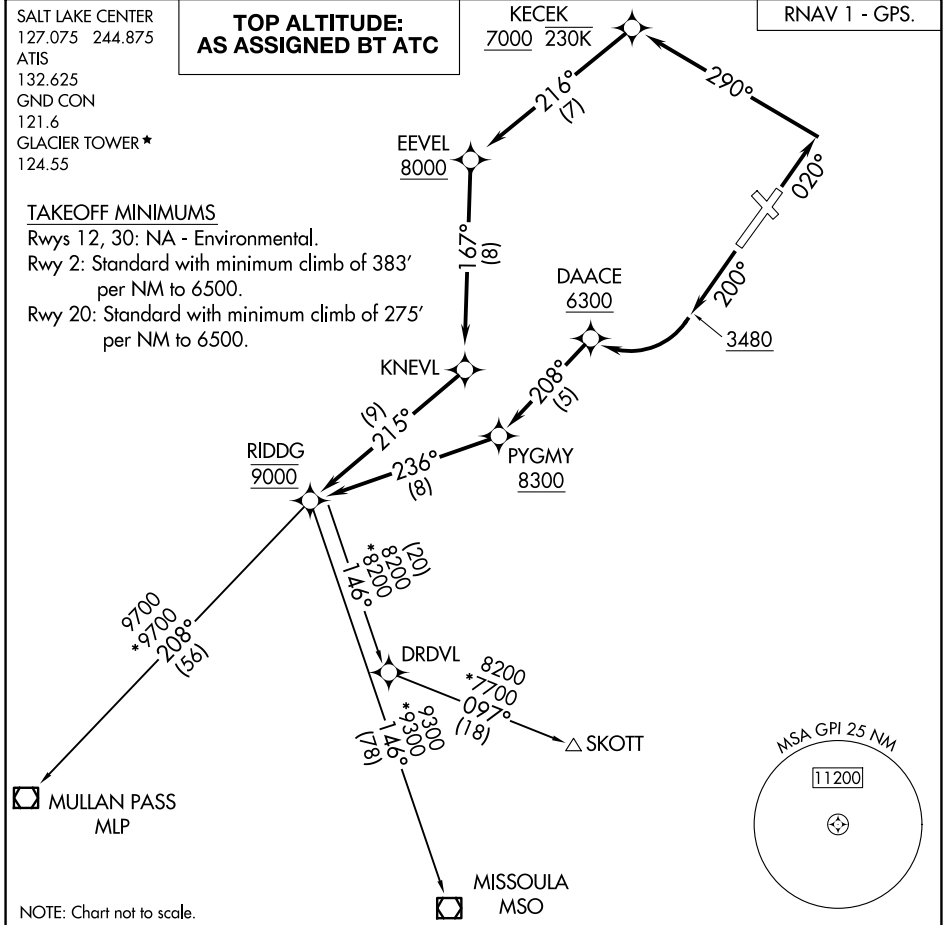
RNAV 1 - GPS.

TAKEOFF MINIMUMS

Rwys 12, 30: NA - Environmental.

Rwy 2: Standard with minimum climb of 383' per NM to 6500.

Rwy 20: Standard with minimum climb of 275' per NM to 6500.



NOTE: Chart not to scale.

DEPARTURE ROUTE DESCRIPTION

TAKEOFF RUNWAY 2: Climb on heading 020° to intercept course 290° to cross KECEK at or above 7000, then on track 216° to cross EEVEL at or above 8000, then on track 167° to KNEVL, then on track 215° to cross RIDDG at 9000, thence. . . .

TAKEOFF RUNWAY 20: Climb on heading 200° to 3480, then right turn direct to cross DAACE at or above 6300, then on track 208° to cross PYGMY at or above 8300, then on track 236° to cross RIDDG at 9000, thence. . . .

. . . on filed transition. Maintain ATC assigned altitude. Expect clearance to filed altitude five minutes after departure.

MISSOULA TRANSITION (RIDDG1.MSO)

MULLAN PASS TRANSITION (RIDDG1.MLP)

SKOTT TRANSITION (RIDDG1.SKOTT)

RIDDG ONE DEPARTURE (RNAV)

(RIDDG1.RIDDG) 05OCT23

KALISPELL, MONTANA
GLACIER PARK INTL (GPI)

NW-1, 15 MAY 2025 to 12 JUN 2025

NW-1, 15 MAY 2025 to 12 JUN 2025