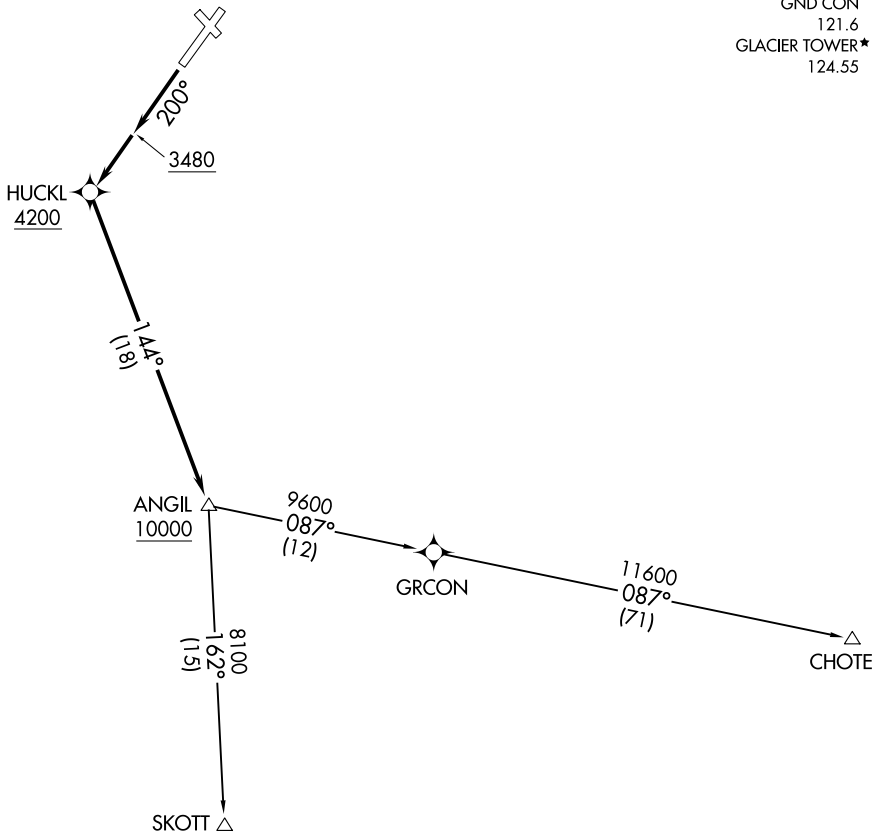


**TOP ALTITUDE:
ASSIGNED BY ATC**

SALT LAKE CENTER
127.075 244.875
ATIS
132.625
GND CON
121.6
GLACIER TOWER*
124.55



NW-1, 15 MAY 2025 to 12 JUN 2025

NW-1, 15 MAY 2025 to 12 JUN 2025

NOTE: GPS required.
NOTE: RNAV 1.
NOTE: Chart not to scale.

TAKEOFF MINIMUMS
Rwys 2, 12, 30: NA - ATC.
Rwy 20: Standard with minimum climb of 500' per NM to 3480.



DEPARTURE ROUTE DESCRIPTION

TAKEOFF RUNWAY 20: Climb heading 200° to 3480, then climb direct to cross HUCKL at or above 4200, then on track 144° to cross ANGIL at or above 10000, thence. . . .

. . . .on (transition). Maintain ATC assigned altitude. Expect filed altitude five minutes after departure.

CHOTE TRANSITION (GPI1.CHOTE)

SKOTT TRANSITION (GPI1.SKOTT)