

LOC I-TWFF 108.3	APP CRS 258°	Rwy Idg TDZE Apt Elev	8704 4153 4153
----------------------------	------------------------	-----------------------------	---

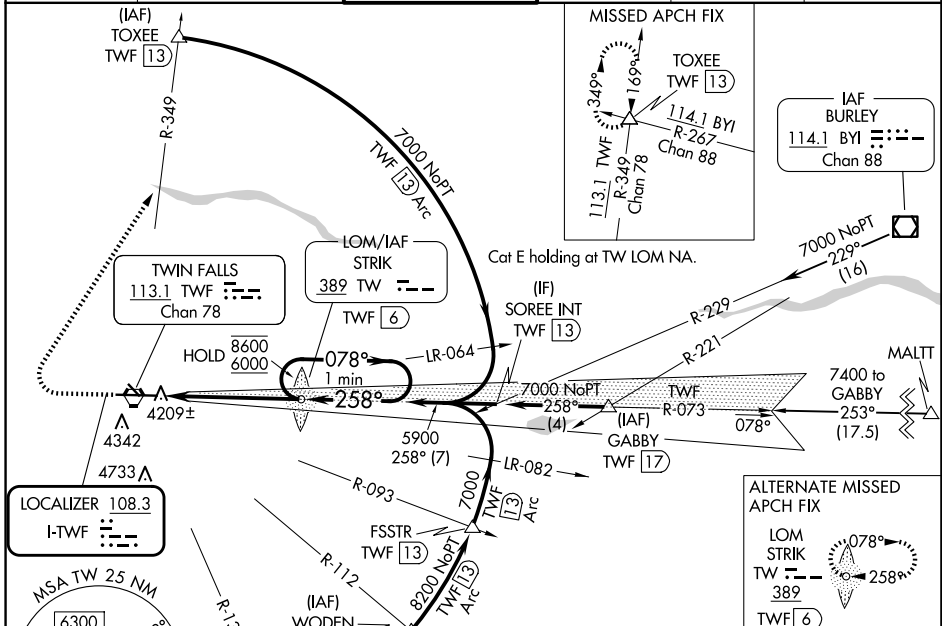
ILS or LOC RWY 26
JOSLIN FLD/MAGIC VALLEY RGNL (TWF)

ADF or DME required.

⚠ Circling Rwy 30 NA at night. When local altimeter setting not received, use Jerome altimeter setting: increase S-ILS 26 DA to 4402 feet; increase all MDAs 60 feet and S-LOC 26 visibility Cat C/D/E 1/8 SM. For inop ALS when using local or Jerome altimeter setting, increase S-ILS 26 Cat E visibility to 3/4 SM and S-LOC 26 Cat E to 1 SM.

MALSR MISSED APPROACH: Climb to 4700 then climbing right turn to 7000 on heading 020° and on TWF VORTAC R-349 to TOXEE INT/TWF 13 DME and hold.

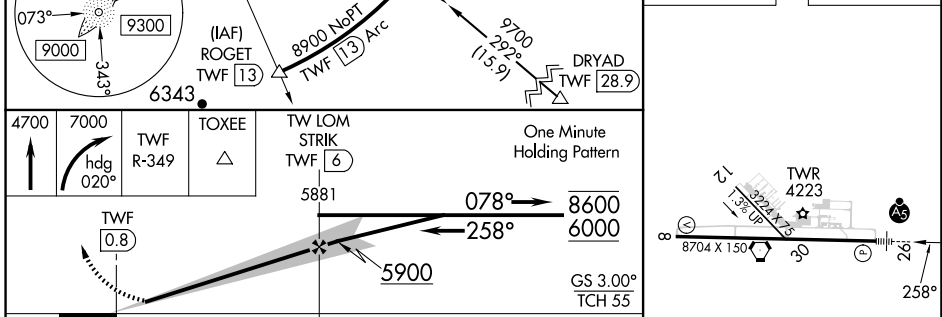
ASOS 135.025	TWIN FALLS APP CON ★ 126.7 353.75	TWIN FALLS TOWER ★ 118.2 (CTAF) 0 317.5	GND CON 121.7	CLNC DEL 123.65	UNICOM 122.95
------------------------	---	---	-------------------------	---------------------------	-------------------------



NW-1, 15 MAY 2025 to 12 JUN 2025

NW-1, 15 MAY 2025 to 12 JUN 2025

ELEV 4153	TDZE 4153
-----------	-----------



CATEGORY	A	B	C	D	E
S-ILS 26		4353-1/2	200 (200-1/2)		
S-LOC 26		4480-1/2	327 (400-1/2)		
CIRCLING	4700-1 547 (600-1)	4780-1 627 (700-1)	5100-2 3/4 947 (1000-2 3/4)	5100-3	947 (1000-3)

REIL Rwy 8	●
HIRL Rwy 8-26	●
FAF to MAP 5.2 NM	
Knots	60 90 120 150 180
Min:Sec	5:12 3:28 2:36 2:05 1:44