

PALESTINE, TEXAS

AL-871 (FAA)

22083

VOR/DME FZT 111.4 Chan 51	APP CRS 202°	Rwy Idg TDZE 416 Apt Elev 423	5005 416 423
---	------------------------	---	---

VOR RWY 18

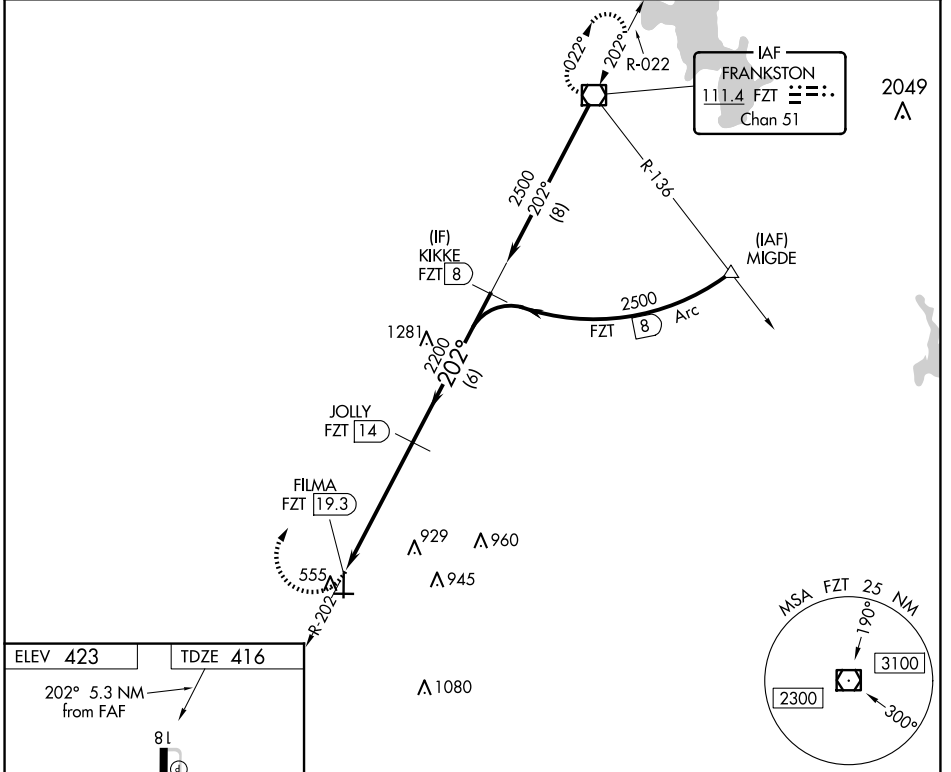
PALESTINE MUNI (PSN)

DME required.

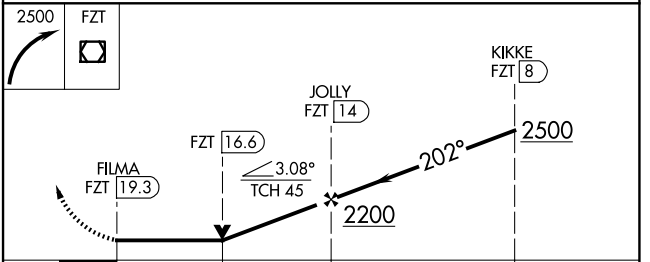
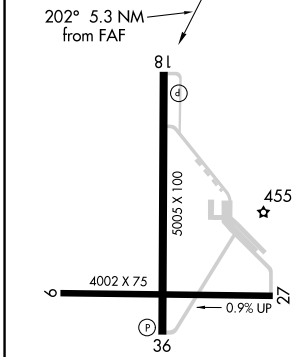
▼
▲ NA Rwy 18 helicopter visibility reduction below 3/4 SM NA.

MISSING APPROACH: Climbing right turn to 2500 direct FZT VOR/DME and hold.

AWOS-3PT 118.025	FORT WORTH CENTER 135.25 265.1	UNICOM 122.7 (CTAF) 0
----------------------------	--	--



ELEV 423	TDZE 416
-----------------	-----------------



CATEGORY	A	B	C	D
S-18	1320-1 1/4	904 (900-1 1/4)	1320-2 1/2	904 (900-2 1/2)
C CIRCLING	1320-1 1/4	897 (900-1 1/4)	1360-2 3/4 937 (1000-2 3/4)	1360-3 937 (1000-3)

PALESTINE, TEXAS
MIRL Rwy 36
MIRL Rwy 18-36 and 9-27 **0**

31°47'N - 95°42'W

PALESTINE MUNI (PSN) VOR RWY 18

SC-5, 15 MAY 2025 to 12 JUN 2025

SC-5, 15 MAY 2025 to 12 JUN 2025