

WAAS CH <b>99611</b> <b>W32A</b>	APP CRS <b>323°</b>	Rwy Idg TDZE Apt Elev	<b>9001</b> <b>1293</b> <b>1297</b>
--	------------------------	-----------------------------	---

# RNAV (GPS) RWY 32

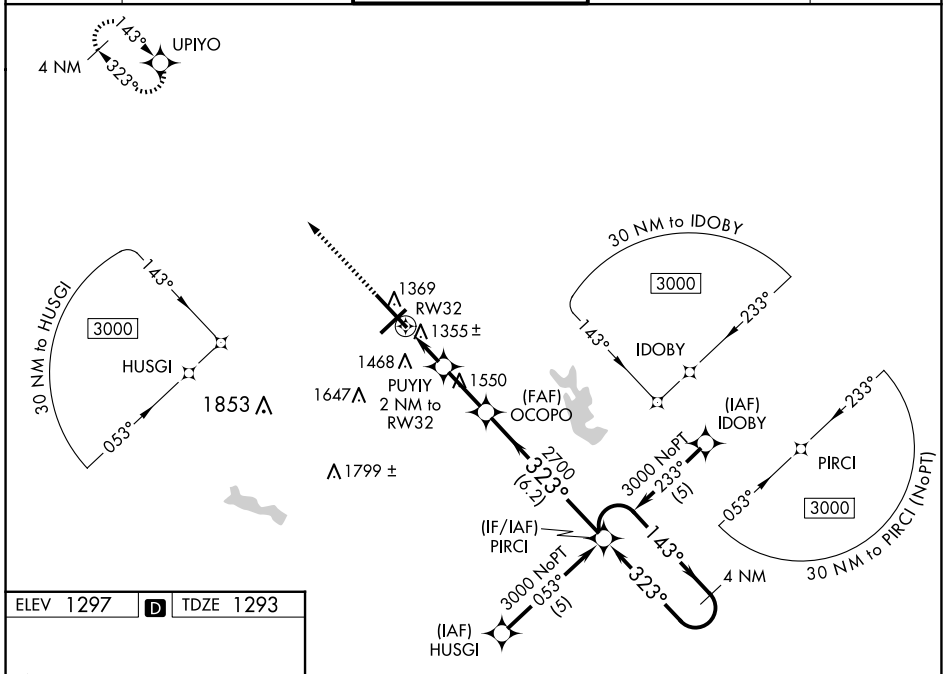
MANSFIELD LAHM RGNL (MFD)

**⚠** Baro-VNAV NA when using Marion altimeter setting. For uncompensated Baro-VNAV systems, LNAV/VNAV NA below -17°C (2°F) or above 46°C (114°F). DME/DME RNP-0.3 NA. When local altimeter not received, use Marion altimeter setting and increase all DA 107 feet and all MDA 120 feet, LNAV/VNAV all Cats visibility ½ SM, LNAV Cat C/D visibility ⅓ SM and Circling Cat C/D visibility ½ SM. For inop MALSRS when using Marion altimeter setting increase LPV all Cats visibility to 1. VDP NA with Marion altimeter setting. \*\* RVR 1800 authorized with use of FD or AP or HUD to DA, NA when using Marion altimeter setting.

MALSRS

MISSED APPROACH:  
Climb to 3000 direct UPIYO and hold.

ATIS <b>125.3</b>	CLEVELAND APP CON * <b>128.35 360.65</b>	MANSFIELD TOWER * <b>119.8 (CTAF) 0291.775</b>	GND CON <b>121.8 291.775</b>	UNICOM <b>122.95</b>
----------------------	---	---	---------------------------------	-------------------------



ELEV 1297 **D** TDZE 1293

Diagram of RWY 32 showing taxiway layout and altitudes:  
 - RWY 32: 3001 x 150  
 - Taxiway 1: 8819 x 150  
 - Taxiway 2: 2001 x 150  
 - Taxiway 3: 6819 x 150  
 - Taxiway 4: 1409  
 - Taxiway 5: 1354  
 - Taxiway 6: 323°

HIRL Rwy 5-23 and 14-32  
 REIL Rwy 5 and 23

3000 UPIYO	OCOPPO	PIRCI	4 NM Holding Pattern	
*LNAV only	PUYIY 2 NM to RW32	2700	143° → 3000	
	*1 NM to RW32	*1960	← 323°	
	1 NM 1 NM 2.2 NM 6.2 NM		GP 3.00 TCH 46	
CATEGORY	A	B	C	D
LPV DA**		1493/24	200 (200-½)	
LNAV/VNAV DA		1789/60	496 (500-1½)	
LNAV MDA	1660/24	367 (400-½)	1660/35	367 (400-¾)
<b>C</b> CIRCLING	1760-1	463 (500-1)	2000-2 703 (800-2)	2000-2¼ 703 (800-2¼)