

WAAS CH <b>53426</b> <b>W14A</b>	APP CRS <b>143°</b>	Rwy Idg TDZE Apt Elev	<b>9001</b> <b>1276</b> <b>1297</b>
--	------------------------	-----------------------------	---

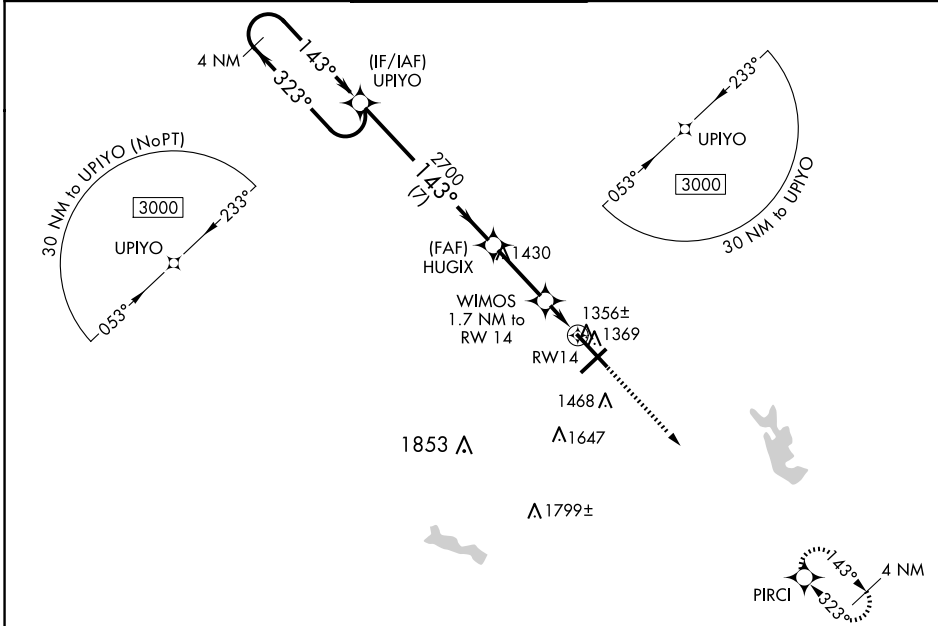
# RNAV (GPS) RWY 14

MANSFIELD LAHM RGNL (MFD)

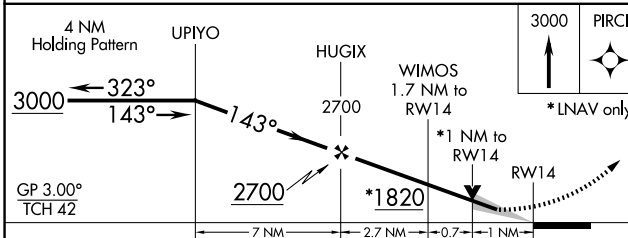
**▼** For uncompensated Baro-VNAV systems, LNAV/VNAV NA below -18°C (0°F) or above 36°C (96°F).  
**▲** When local altimeter not received, use Marion altimeter setting and increase all DA 107 feet and all MDA 120 feet, and LPV all Cats visibility to 1 SM, LNAV/VNAV all Cats, and LNAV Cat C/D to 1 3/8 SM. Increase Circling Cat C/D visibility 1/2 SM. VDP and Baro-VNAV NA when using Marion altimeter setting.

**MISSED APPROACH:**  
Climb to 3000 direct PIRCI and hold.

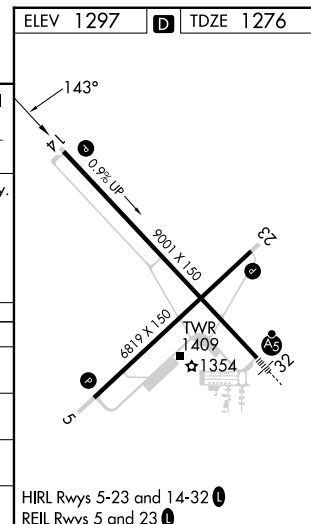
ATIS <b>125.3</b>	CLEVELAND APP CON * <b>128.35 360.65</b>	MANSFIELD TOWER * <b>119.8 (CTAF) 291.775</b>	GND CON <b>121.8 291.775</b>	UNICOM <b>122.95</b>
----------------------	---	--	---------------------------------	-------------------------



ELEV 1297	<b>D</b> TDZE 1276
-----------	--------------------



CATEGORY	A	B	C	D
LPV DA		1476-3/4	200 (200-3/4)	
LNAV/VNAV DA		1557-7/8	281 (300-7/8)	
LNAV MDA		1620-1	344 (400-1)	
<b>C</b> CIRCLING	1760-1	463 (500-1)	2000-2 703 (800-2)	2000-2 1/4 703 (800-2 1/4)



EC-2, 15 MAY 2025 to 12 JUN 2025

EC-2, 15 MAY 2025 to 12 JUN 2025