

(JEDGI2.JEDGI) 23334

# JEDGI TWO DEPARTURE

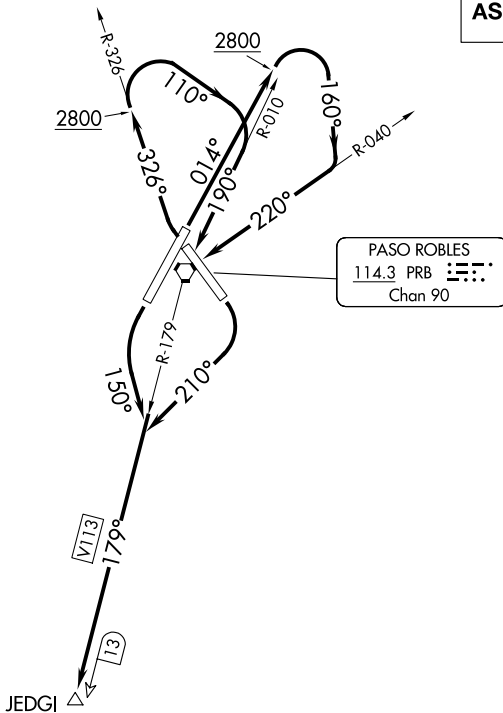
AL-858 (FAA)

PASO ROBLES MUNI (PRB)  
PASO ROBLES, CALIFORNIA

OAKLAND CENTER  
128.7 307.0

DME required.

**TOP ALTITUDE:  
ASSIGNED BY ATC**



### TAKEOFF MINIMUMS

- Rwy 1: Standard with minimum climb of 230' per NM to 2200.
- Rwy 13: Standard with minimum climb of 220' per NM to 1700.
- Rwy 19: Standard.
- Rwy 31: Standard with minimum climb of 235' per NM to 2200.

NOTE: Chart not to scale.

### DEPARTURE ROUTE DESCRIPTION

**TAKEOFF RUNWAY 1:** Climb on heading 014° to 2800 then climbing right turn heading 160° to intercept PRB VORTAC R-040 to PRB VORTAC, then PRB VORTAC R-179 to JEDGI/PRB 13 DME, thence. . . .

**TAKEOFF RUNWAY 13:** Climbing right turn to heading 210° to intercept PRB VORTAC R-179 to JEDGI/PRB 13 DME, thence. . . .

**TAKEOFF RUNWAY 19:** Climbing left turn heading to 150° to intercept PRB VORTAC R-179 to JEDGI/PRB 13 DME, thence. . . .

**TAKEOFF RUNWAY 31:** Climbing right turn to intercept PRB VORTAC R-326 to 2800 then climbing right turn to heading 110° to intercept PRB VORTAC R-010 to PRB VORTAC, then PRB VORTAC R-179 to JEDGI/PRB 13 DME, thence. . . .

. . . .maintain ATC assigned altitude; expect clearance to filed altitude 10 minutes after departure.

**JEDGI TWO DEPARTURE**  
(JEDGI2.JEDGI) 19MAY22

PASO ROBLES, CALIFORNIA  
PASO ROBLES MUNI (PRB)

SW-3, 15 MAY 2025 to 12 JUN 2025

SW-3, 15 MAY 2025 to 12 JUN 2025