

WAAS CH <b>56315</b> <b>W34A</b>	APP CRS <b>337°</b>	Rwy Idg TDZE Apt Elev	<b>7203</b> <b>796</b> <b>799</b>
--	------------------------	-----------------------------	---

# RNAV (GPS) RWY 34

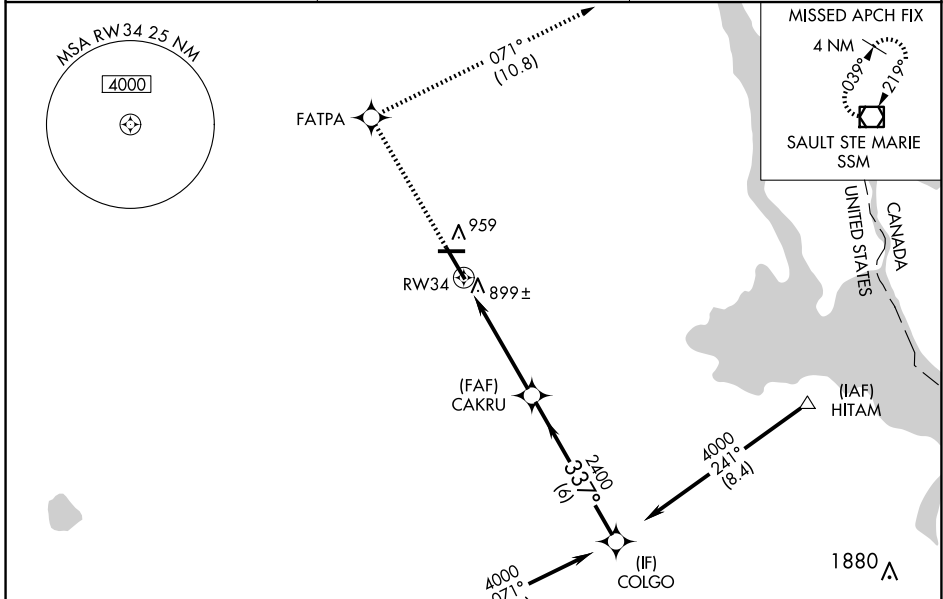
CHIPPEWA COUNTY INTL (CIU)

RNP APCH.

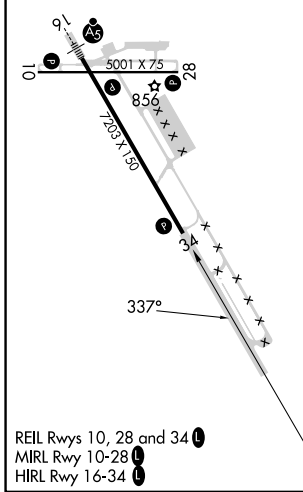
▼ For uncompensated Baro-VNAV systems, LNAV/VNAV NA below -16°C or above 54°C.  
 ▲ When local altimeter setting not received, use Sault Ste Marie Muni/Sanderson Fld altimeter setting; increase LPV DA to 1091 feet, LNAV/VNAV DA to 1243 feet and all MDA 60 feet; increase LNAV Cat D visibility ¼ SM. Baro-VNAV and VDP NA when using Sault Ste Marie Muni/Sanderson Fld altimeter setting.

MISSED APPROACH:  
 Climb to 3000 direct FATPA and track 071° to SSM VOR/DME and hold.

AWOS-3PT <b>127.575</b>	TORONTO CENTER <b>132.65 344.5</b>	UNICOM <b>123.0 (CTAF)</b>
----------------------------	---------------------------------------	-------------------------------



ELEV 799	<b>D</b>	TDZE 796
----------	----------	----------



Procedure NA for arrival at PINES via V193 southbound.

COLGO	CAKRU	FATPA	SSM
4000	2400	3000 ↑	tr 071°
GP 3.00° TCH 40	337°	*1.2 NM to RW34	*LNAV only.
	2400	RW34	
	6 NM	3.7 NM	1.2 NM
CATEGORY	A	B	C
LPV DA		1046-1	250 (300-1)
LNAV/DA VNAV		1198-1½	402 (400-1½)
LNAV MDA	1200-1	404 (500-1)	1200-1¼ 404 (500-1¼)
<b>C</b> CIRCLING	1260-1	461 (500-1)	1260-1½ 461 (500-1½) 1360-2 561 (600-2)

EC-1, 15 MAY 2025 to 12 JUN 2025

EC-1, 15 MAY 2025 to 12 JUN 2025