

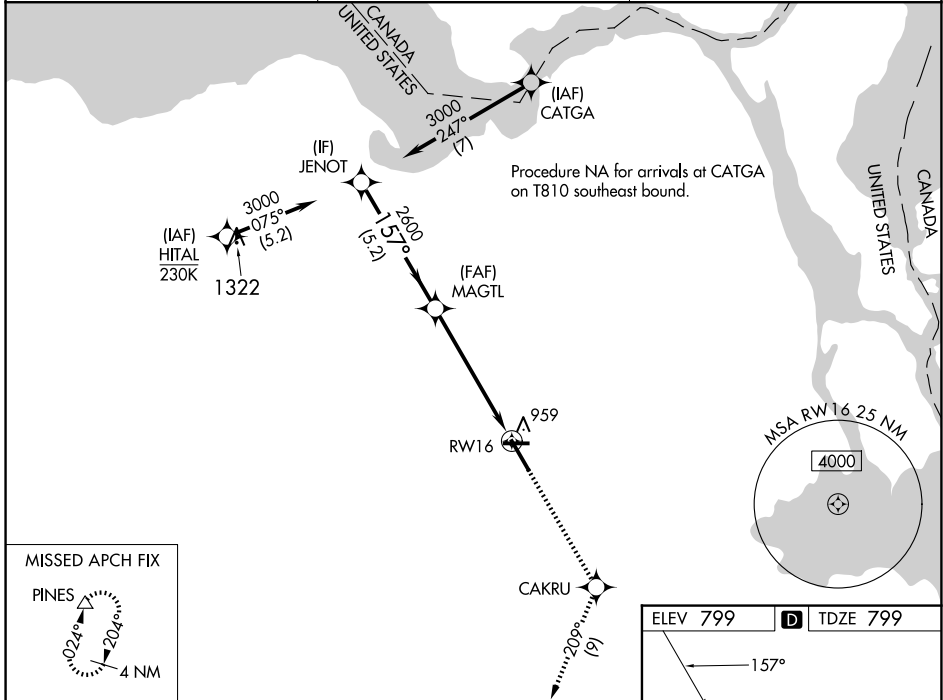
WAAS CH 69215 W16A	APP CRS 157°	Rwy Idg TDZE Apr Elev	7203 799 799
--	------------------------	-----------------------------	---

RNAV (GPS) RWY 16

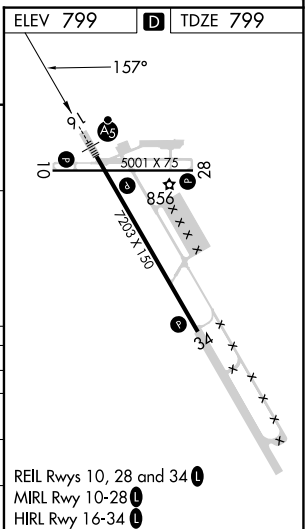
CHIPPEWA COUNTY INTL (CIU)

RNP APCH - GPS.		MALSR	MISSED APPROACH: Climb to 3000 direct CAKRU and on track 209° to PINES and hold.
<p>▼ For uncompensated Baro-VNAV systems, LNAV/VNAV NA below -16°C or above 54°C. ▲ For inop ALS, increase LNAV/VNAV all Cats visibility to 1 SM.</p>			

AWOS-3PT 127.575	TORONTO CENTER 132.65 344.5	UNICOM 123.0 (CTAF)
----------------------------	---------------------------------------	-------------------------------



MISSED APCH FIX		PINES	
<p>JENOT</p> <p>3000</p> <p>157°</p> <p>GP 3.00° TCH 58</p>		<p>3000</p> <p>CAKRU</p> <p>↑</p>	<p>tr 209°</p> <p>PINES</p> <p>△</p>
<p>MAGTL</p> <p>2600</p> <p>1.1 NM to RWY 16</p> <p>RWY 16</p>			
<p>5.2 NM</p> <p>4.3 NM</p> <p>1.1</p>			
CATEGORY	A	B	C
LPV DA		999-1/2	200 (200-1/2)
LNAV/VNAV DA		1140-5/8	341 (400-5/8)
LNAV MDA	1220-1/2	421 (500-1/2)	1220-3/4
			421 (500-3/4)
CIRCLING	1260-1	461 (500-1)	1260-1/2
			461 (500-1/2)
			1360-2
			561 (600-2)



EC-1, 15 MAY 2025 to 12 JUN 2025

EC-1, 15 MAY 2025 to 12 JUN 2025

REIL Rwy 10, 28 and 34
MIRL Rwy 10-28
HIRL Rwy 16-34