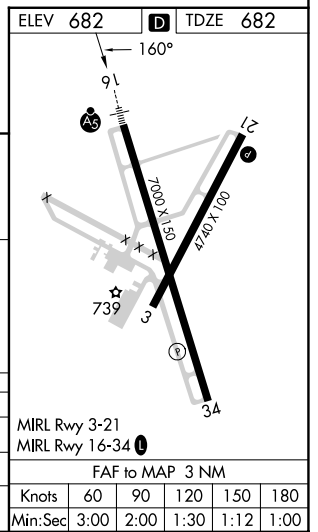
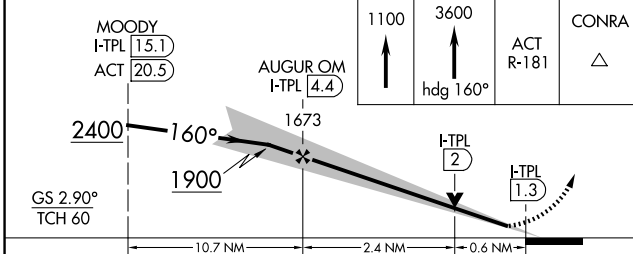
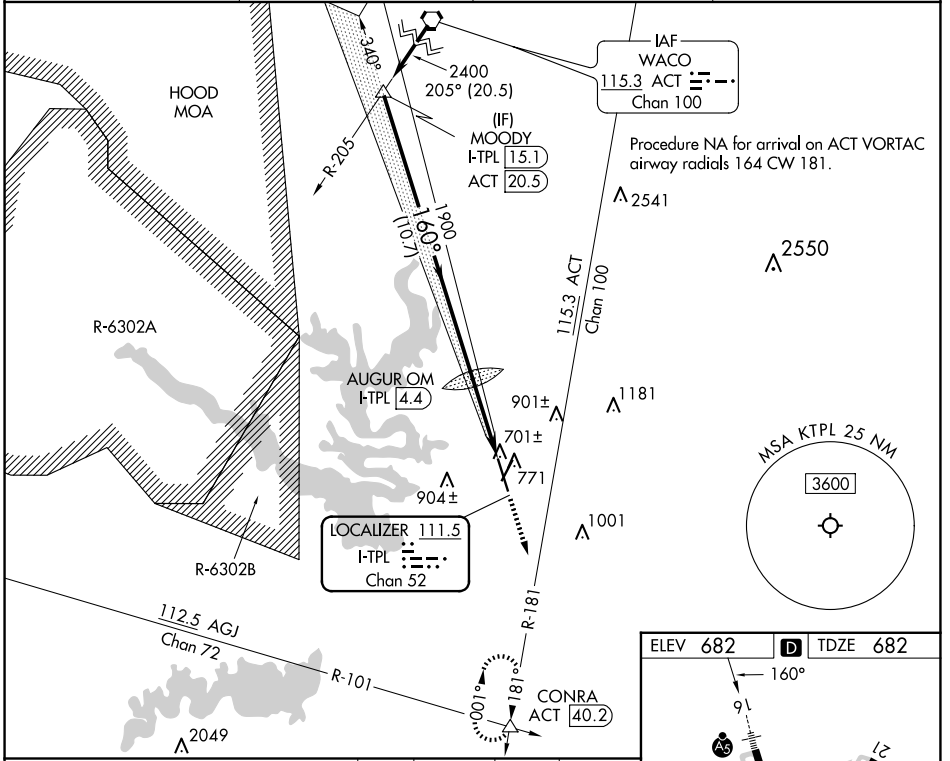


LOC/DME I-TPL <b>111.5</b> Chan <b>52</b>	APP CRS <b>160°</b>	Rwy Idg <b>7000</b> TDZE <b>682</b> Apt Elev <b>682</b>
---	------------------------	---

# ILS or LOC RWY 16

## DRAUGHON-MILLER CENTRAL TEXAS RGNL (T'PL)

<p><b>⚠</b> NA Autopilot coupled approach NA below 990. For inop ALS, increase S-LOC 16 Cats C/D visibility to 1 SM.</p>	<p><b>MALSR</b> </p>	<p><b>MISSED APPROACH:</b> Climb to 1100 then continue climb to 3600 on heading 160° and on ACT VORTAC R-181 to CONRA INT/ACT 40.2 DME and hold, continue climb-in-hold to 3600.</p>	
<p>AWOS-3PT <b>134.975</b></p>	<p>GRAY APP CON <b>120.075 370.0</b></p>	<p>CINC DEL <b>125.9</b></p>	<p>UNICOM <b>123.0 (CTAF)</b> </p>



CATEGORY	A	B	C	D
S-ILS 16		882-1/2	200 (200-1/2)	
S-LOC 16		980-1/2	298 (300-1/2)	
<b>C</b> CIRCLING	1120-1 438 (500-1)	1180-1 498 (500-1)	1280-1 1/2 598 (600-1 1/2)	1420-2 1/4 738 (800-2 1/4)

SC-3, 15 MAY 2025 to 12 JUN 2025

SC-3, 15 MAY 2025 to 12 JUN 2025