

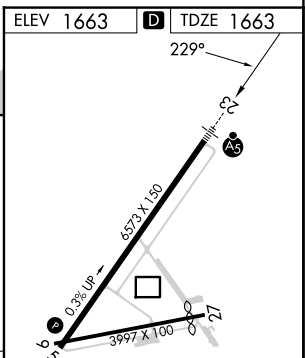
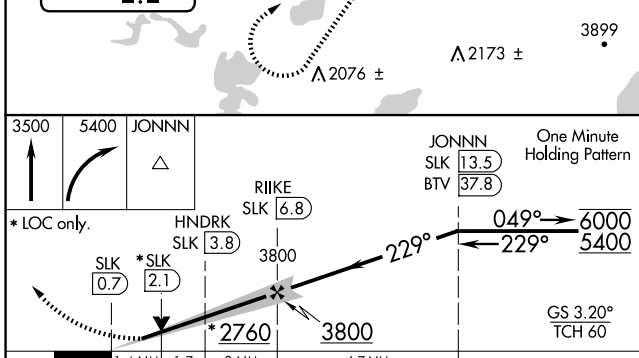
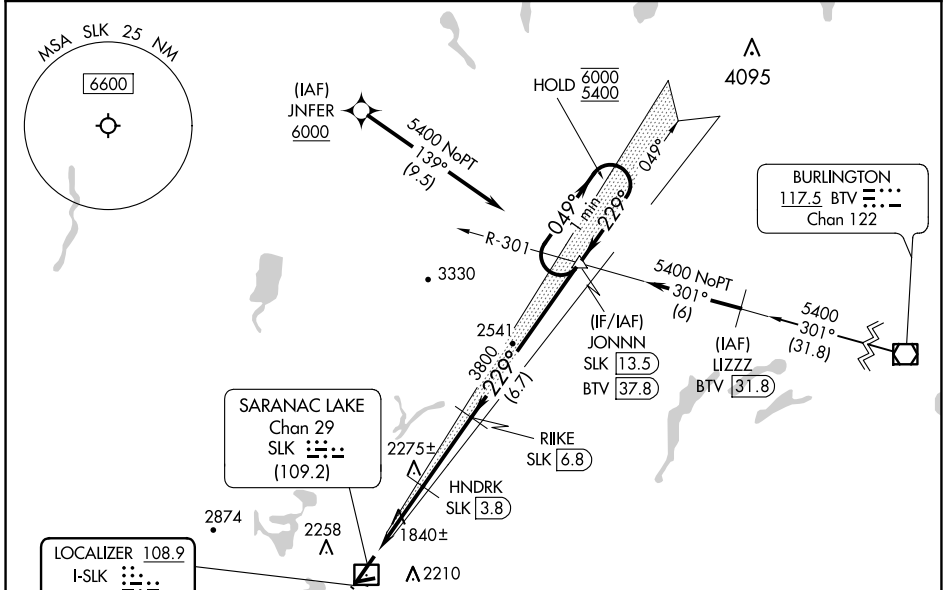
LOC I-SLK <b>108.9</b>	APP CRS <b>229°</b>	Rwy Idg TDZE Apt Elev	<b>6333</b> <b>1663</b> <b>1663</b>
---------------------------	------------------------	-----------------------------	---

# ILS or LOC RWY 23

ADIRONDACK RGNL (SLK)

DME required. RNAV 1-GPS required.	MALSR 	MISSED APPROACH: Climb to 3500 then climbing right turn to 5400 direct JONNN and hold.
Circling Rwy 5, 9, 27 NA at night. DME from SLK DME. Simultaneous reception of I-SLK and SLK DME required. LOC only Rwy 23 helicopter visibility reduction below 3/4 SM NA. For inop ALS, increase S-LOC 23 Cat A/B visibility to 1 SM.		

ASOS <b>124.175</b>	BOSTON CENTER <b>120.35 342.25</b>	UNICOM <b>123.0 (CTAF)</b>
------------------------	---------------------------------------	-------------------------------



CATEGORY	A	B	C	D
S-ILS 23	1863-1/2		200 (200-1/2)	
S-LOC 23	2200-3/4	537 (600-3/4)	2200-1	537 (600-1)
CIRCLING	2500-1 1/4 837 (900-1 1/4)	2660-1 1/2 997 (1000-1 1/2)	2660-3 997 (1000-3)	2700-3 1037 (1100-3)

HIRL Rwy 5-23  
MIRL Rwy 9-27

NE-2, 15 MAY 2025 to 12 JUN 2025

NE-2, 15 MAY 2025 to 12 JUN 2025