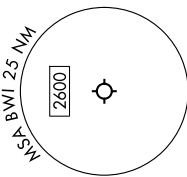
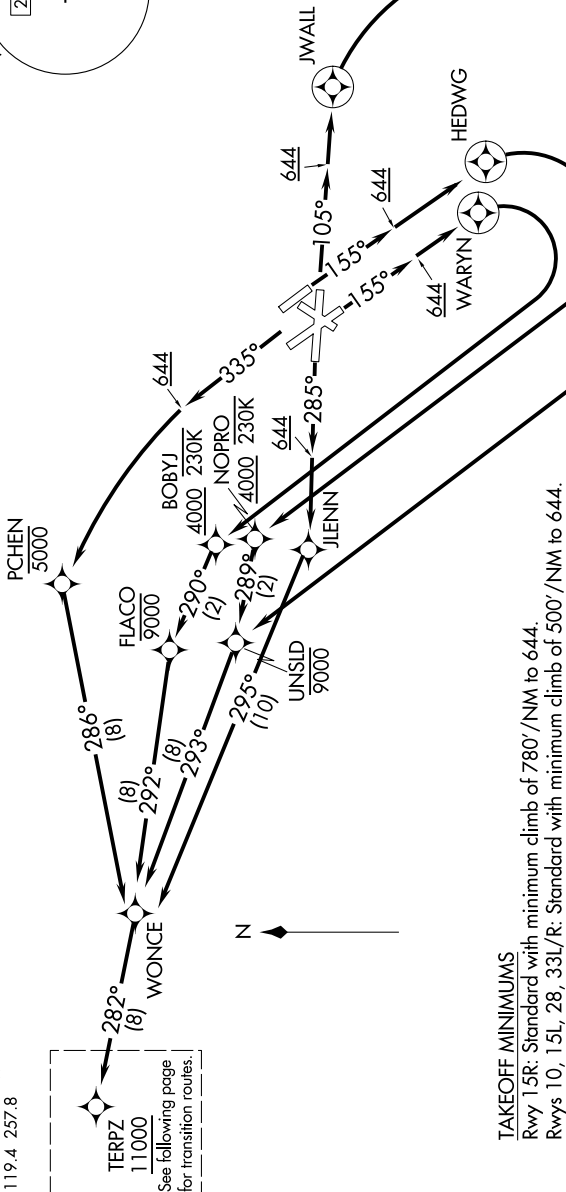


**TOP ALTITUDE:  
17000**

RNAV 1 - DME/DME/IRU or GPS.  
RADAR required.



NE-3, 15 MAY 2025 to 12 JUN 2025



**TAKEOFF MINIMUMS**

Rwy 15R: Standard with minimum climb of 780'/NM to 644.  
Rwys 10, 15L, 28, 33L/R: Standard with minimum climb of 500'/NM to 644.

NOTE: Jet aircraft only.

(CONTINUED ON FOLLOWING PAGE)

NOTE: Chart not to scale.

NE-3, 15 MAY 2025 to 12 JUN 2025