

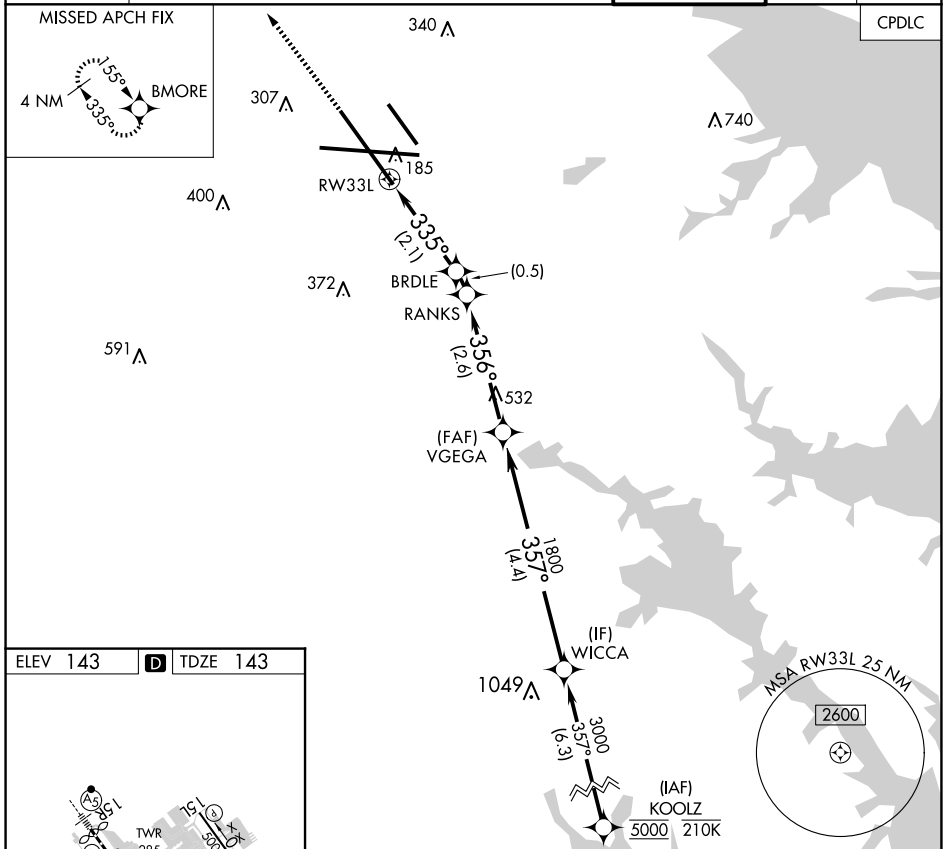
# RNAV (RNP) X RWY 33L

BALTIMORE/WASHINGTON INTL THURGOOD MARSHALL (BWI)

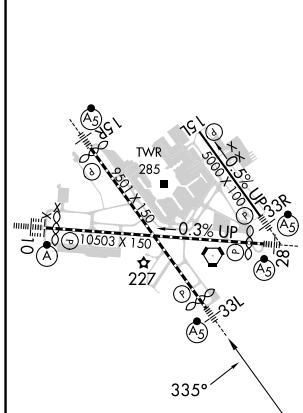
APP CRS	Rwy Idg	<b>8301</b>
<b>335°</b>	TDZE	<b>143</b>
	Apt Elev	<b>143</b>

RNP AR APCH - GPS, RF.	MALSR	MISSED APPROACH: Climb to 3000 direct BMORE and hold.
▼ For uncompensated Baro-VNAV systems, procedure NA below -11°C or above 54°C.		

D-ATIS	POTOMAC APP CON	BALTIMORE TOWER	GND CON	CLNC DEL
<b>115.1 127.8</b>	(020°-100°) <b>119.7 290.475</b> (131°-180°) (101°-130°) <b>128.7 307.9</b> (181°-019°)	<b>119.4 257.8</b>	<b>121.9</b>	<b>118.05</b>



ELEV 143	<b>D</b>	TDZE 143
----------	----------	----------



TDZ/CL Rwy 10 and 33L  
REIL Rwy 15L and 33R  
HIRL all Rwy

3000	BMORE	VGSI and RNAV glidepath not coincident (VGSI Angle 3.00/TCH 72).		WICCA	
↑		BRDLE	RANKS	VEGGA	
		839	986	1800	
				357°	
				1800	
				3000	
				GP 3.00°	
				TCH 55	
		2.1 NM	0.5 NM	2.6 NM	4.4 NM
CATEGORY	A	B	C	D	
RNP 0.30 DA	479/26 336 (400-1/2)				

## AUTHORIZATION REQUIRED

# RNAV (RNP) X RWY 33L

NE-3, 15 MAY 2025 to 12 JUN 2025

NE-3, 15 MAY 2025 to 12 JUN 2025