

(CONLE5.CONLE) 24193

AL-804 (FAA)

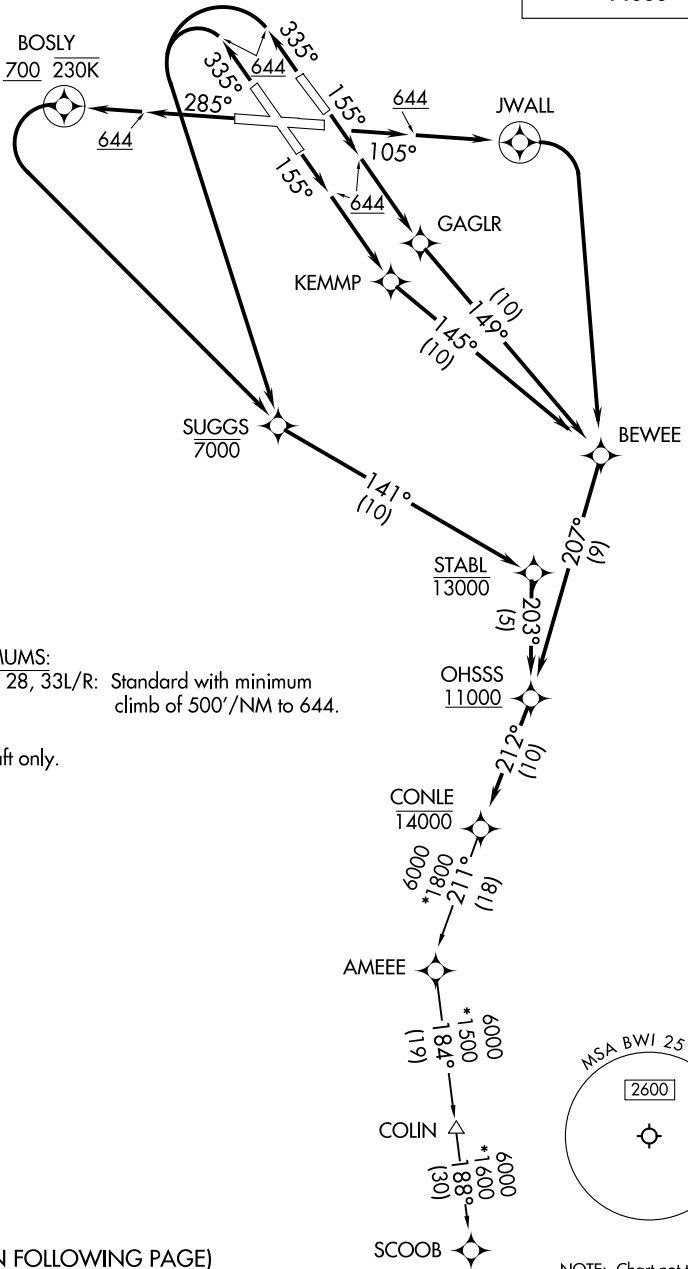
BALTIMORE/  
WASHINGTON INTL THURGOOD MARSHALL (BWI)  
BALTIMORE, MARYLAND

# CONLE FIVE DEPARTURE (RNAV)

POTOMAC DEP CON  
124.55 317.425  
D-ATIS  
115.1 127.8  
CLNC DEL  
118.05  
CPDLC  
GND CON  
121.9  
BALTIMORE TOWER  
119.4 257.8

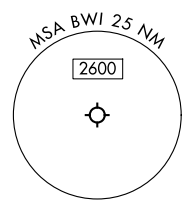
RNAV 1-DME/DME/IRU or GPS.  
RADAR required.

**TOP ALTITUDE:  
14000**



TAKEOFF MINIMUMS:  
Rwys 10, 15L/R, 28, 33L/R: Standard with minimum climb of 500'/NM to 644.

NOTE: Jet aircraft only.



(CONTINUED ON FOLLOWING PAGE)

NOTE: Chart not to scale.

CONLE FIVE DEPARTURE (RNAV)  
(CONLE5.CONLE) 11 JUL 24

BALTIMORE/  
WASHINGTON INTL THURGOOD MARSHALL (BWI)  
BALTIMORE, MARYLAND

NE-3, 15 MAY 2025 to 12 JUN 2025

NE-3, 15 MAY 2025 to 12 JUN 2025