

WAAS CH 90241 W35A	APP CRS 349°	Rwy Idg TDZE Apt Elev	7000 5274 5274
--	------------------------	-----------------------------	---

RNAV (GPS) Z RWY 35

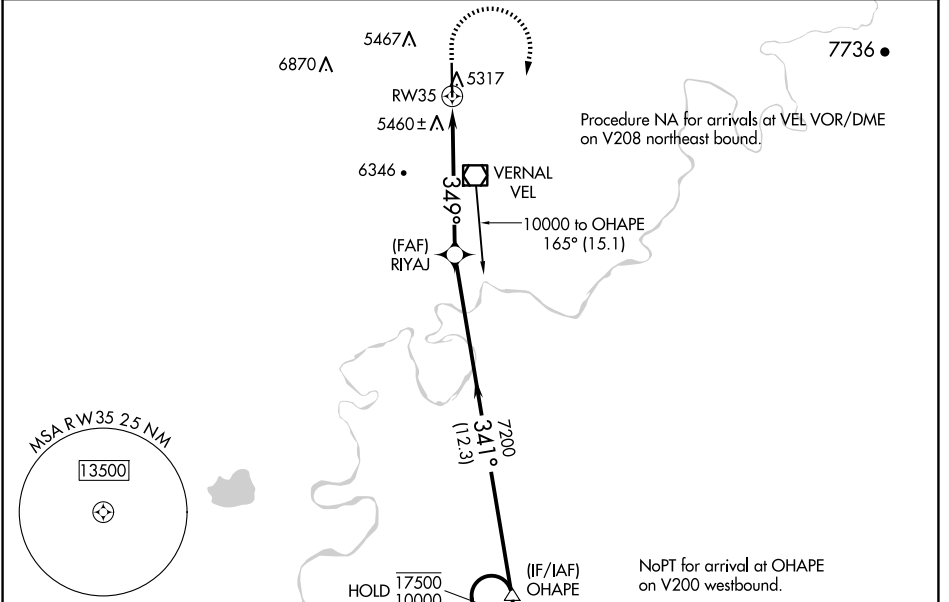
VERNAL RGNL (VEL)

RNP APCH.

▼ Rwy 35 helicopter visibility reduction below 3/4 SM NA.
▲ For uncompensated Baro-VNAV systems, procedure NA below -26°C or above 54°C.
☁ -26°C

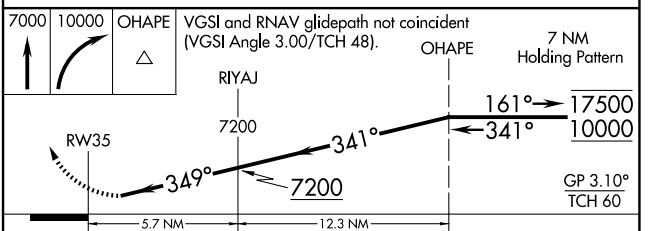
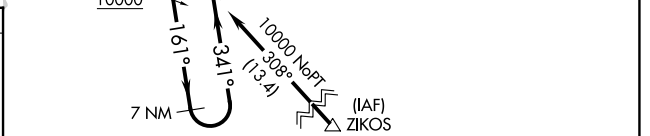
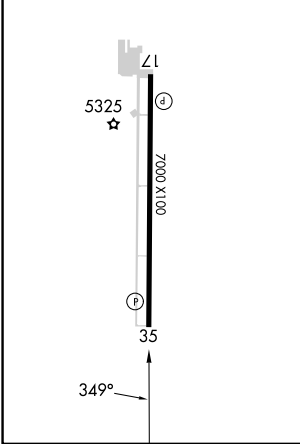
MISSED APPROACH: Climb to 7000 then climbing right turn to 10000 direct OHAPE and hold.
 *Missed approach requires minimum climb of 290 feet per NM to 8600.

ASOS 118.125	SALT LAKE CENTER 119.95 377.15	UNICOM 122.7 (CTAF)
------------------------	--	-------------------------------



ELEV 5274	D	TDZE 5274
-----------	----------	-----------

REIL Rwy 17 and 35
 MIRL Rwy 17-35



CATEGORY	A	B	C	D
LPV DA*	5610-1 336 (400-1)			
LPV DA	6175-2½ 901 (1000-2½)			
LNAV/VNAV DA*	5786-1¾ 512 (600-1¾)			
LNAV/VNAV DA	6093-2½ 819 (900-2½)			

RNAV (GPS) Z RWY 35

SW-4, 15 MAY 2025 to 12 JUN 2025

SW-4, 15 MAY 2025 to 12 JUN 2025