

APP CRS **264°**
 Rwy Idg **5286**
 TDZE **533**
 Apt Elev **545**

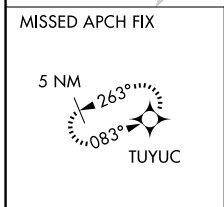
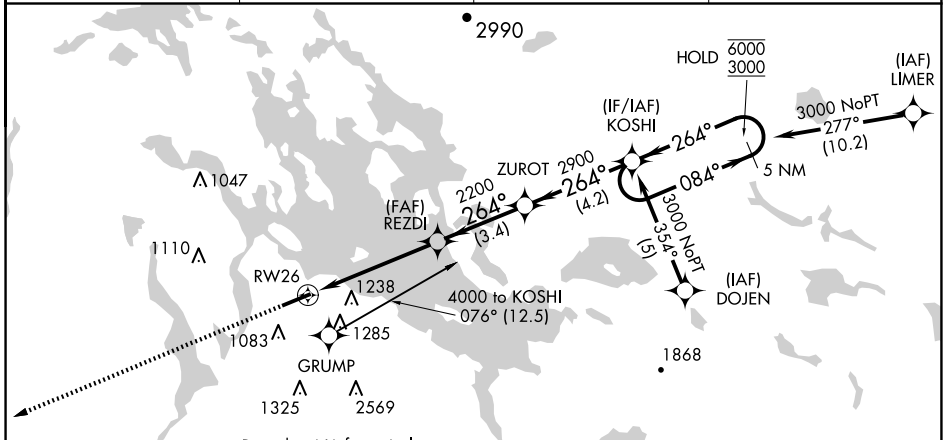
RNAV (GPS) RWY 26

LACONIA MUNI (LCI)

RNP APCH - GPS.
 Circling NA south of Rwy 8-26. Rwy 26 helicopter visibility reduction below 1 SM NA.
 When local altimeter setting not received, use CON altimeter setting and increase all MDAs 80 feet. Straight-in Rwy 26 NA at night, Circling Rwy 26 NA at night.

MISSED APPROACH: Climb to 4400 direct TUYUC and hold, continue climb-in-hold to 4400.

AWOS-3PT 133.525	BOSTON APP CON 134.75 254.25	CLNC DEL 119.85	UNICOM 123.0 (CTAF)
----------------------------	--	---------------------------	-------------------------------

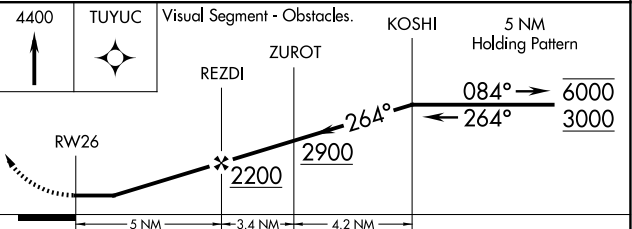
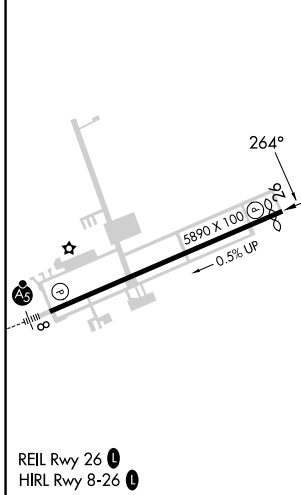
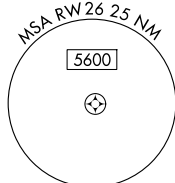


Procedure NA for arrivals at GRUMP on T395 southwest.

ELEV 545 **D** TDZE 533

CONCORD CON

Procedure NA for arrivals on CON VOR/DME airway radials 036 CW 087.



CATEGORY	A	B	C	D
LNAV MDA	1420-1¼	887 (900-1¼)	1420-2½	887 (900-2½)
C CIRCLING	1420-1¼ 875 (900-1¼)	1420-1½ 875 (900-1½)	1420-3 875 (900-3)	1460-3 915 (1000-3)

NE-1, 15 MAY 2025 to 12 JUN 2025

NE-1, 15 MAY 2025 to 12 JUN 2025