

TACAN Y RWY 33

TACAN BAB Chan 23	APCH CRS 317°	Rwy ldg 12,001
		TDZE 105
		Arprt Elev 113

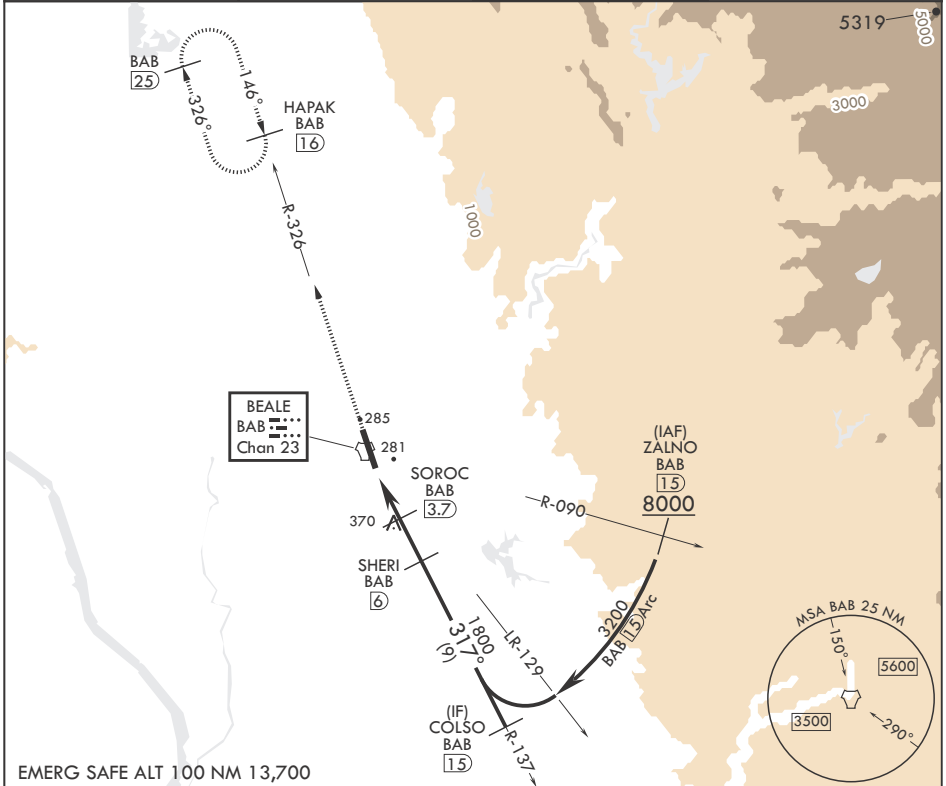
-(USAF)

BEALE AFB (KBAB)

▼ *When ALS inop, increase CAT AB RVR to 55 and vis to 1 mile, CAT CDE vis to 1 1/4 miles.
** Circling not authorized E of Rwy 15-33.

ALSF-1 MISSED APPROACH: Climb to 3600 intercept BAB TACAN R-326 to HAPAK and hold.

ATIS* 124.55 273.5	NORCAL APP CON 125.4 259.1	TOWER* 119.4 284.75	GND CON 121.6 257.75
-----------------------	-------------------------------	------------------------	-------------------------

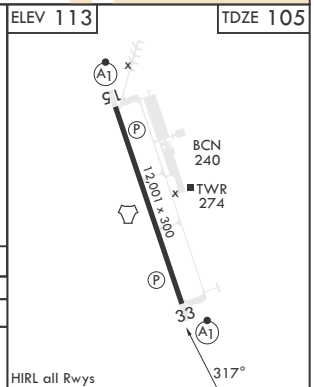


SW-2, 15 MAY 2025 to 12 JUN 2025

SW-2, 15 MAY 2025 to 12 JUN 2025

EMERG SAFE ALT 100 NM 13,700

3600 ↑ BAB R-326	HAPAK BAB 16	COLSO BAB 15	ELEV 113	TDZE 105	
BAB TACAN	EGUYO BAB 1.5	BAB 2.2	SOROC BAB 3.7	SHERI BAB 6	
1000		1800		3200	
≤ 3.09°		317°			
TCH 51					
.5		2.2 NM		2.3 NM	
CATEGORY	A	B	C	D	E
S-33*	540/24	435 (500-1/2)	540/40	435	(500-3/4)
CIRCLING**	600-1	487 (500-1)	600-1 1/2 487 (500-1 1/2)	800-2 1/4 687 (700-2 1/4)	800-2 1/2 687 (700-2 1/2)



TACAN Y RWY 33