

MARYSVILLE, CALIFORNIA

TACAN Y RWY 15

TACAN BAB Chan 23	APCH CRS 153°	Rwy ldg 12,001	TDZE 113
		Arprt Elev 113	

-(USAF)

BEALE AFB (KBAB)

ALSIF-1 MISSED APPROACH: Climb to 700 on heading 153°, then climbing right turn to 4700 heading 018° to intercept BAB R-333 to ZARAG and hold, continue climb-in-hold to 4700.

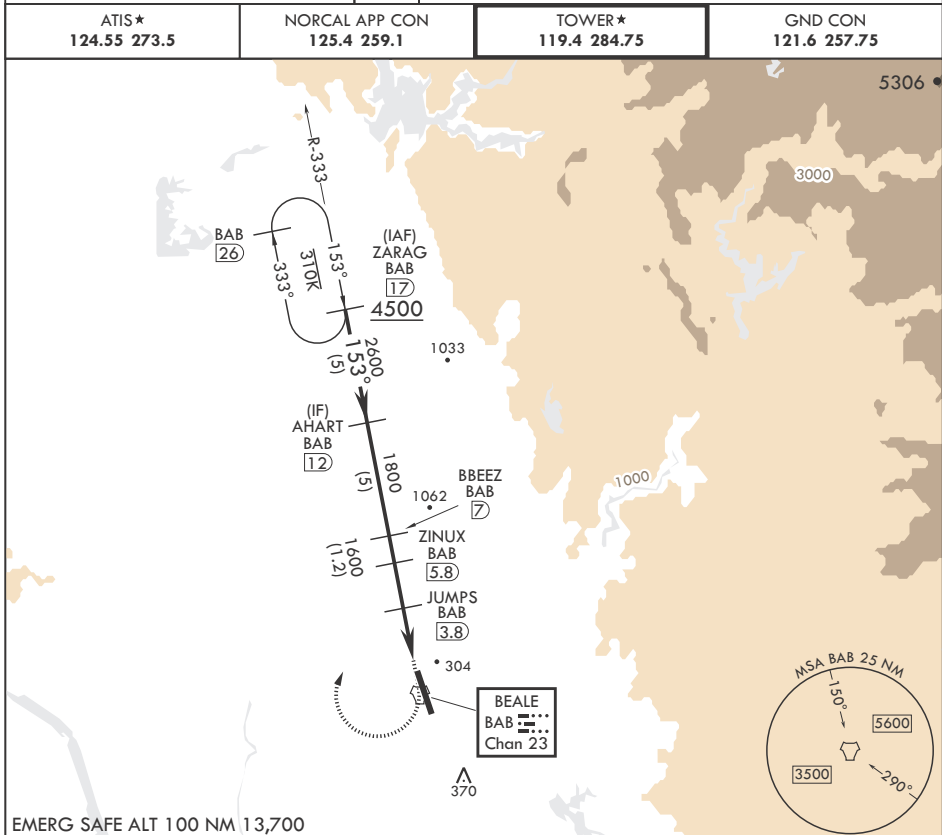
ATIS* 124.55 273.5

NORCAL APP CON 125.4 259.1

TOWER* 119.4 284.75

GND CON 121.6 257.75

EMERG SAFE ALT 100 NM 13,700



ZARAG BAB 17	AHART BAB 12	BBEZ BAB 7	ZINUX BAB 5.8	JUMPS BAB 3.8	BAB 2.4	AGEKE BAB 1.5	TACAN
4500	2600	1800	1600	1000			
153°		2.83° ≥ TCH 53		2 NM		2.3 NM	
700		4700		hdg 018°		BAB R-333	
ELEV 113				TDZE 113			
CATEGORY	A	B	C	D	E		
S-15*	560/24	447 (500-½)	560/45	447	500-¾)		
CIRCLING**	600-1	487 (500-1)	600-1½ (500-1½)	800-2¼ (700-2¼)	800-2½ (700-2½)		

MARYSVILLE, CALIFORNIA
Amdt 6 22FEB24

39°08'N - 121°26'W

BEALE AFB (KBAB)

TACAN Y RWY 15

SW-2, 15 MAY 2025 to 12 JUN 2025

SW-2, 15 MAY 2025 to 12 JUN 2025