

MARYSVILLE, CALIFORNIA

# HI-TACAN Z RWY 15

TACAN BAB Chan 23	APCH CRS 153°	Rwy ldg TDZE 12,001	113
		Arprt Elev	113

(- USAF)

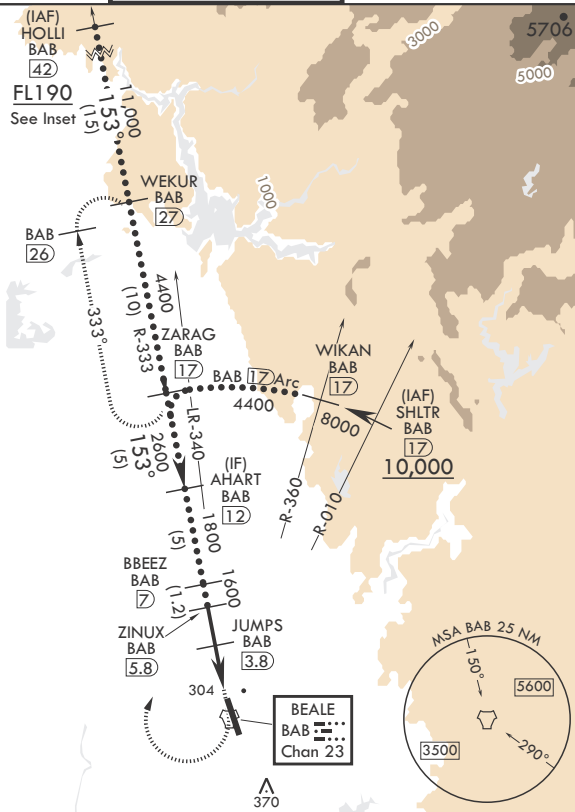
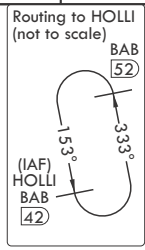
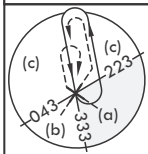
BEALE AFB (KBAB)

▼ \* When ALS inop, increase vis to 1 3/8 miles.  
 \*\* Circling not authorized E of Rwy 15-33.



MISSED APPROACH: Climb to 700 on heading 153°, then climbing right turn to 4700 heading 018° to intercept BAB R-333 to ZARAG and hold, continue climb in hold to 4700.

ATIS* 124.55 273.5	NORCAL APP CON 125.4 259.1	TOWER* 119.4 284.75	GND CON 121.6 257.75
--------------------	----------------------------	---------------------	----------------------

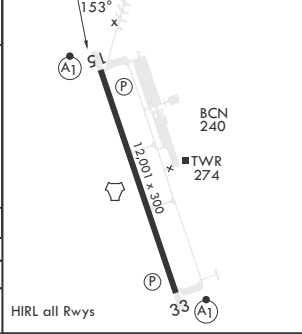
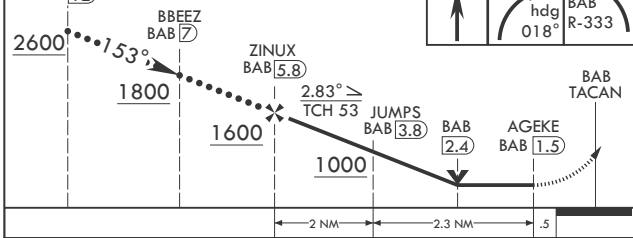


SW-2, 15 MAY 2025 to 12 JUN 2025

SW-2, 15 MAY 2025 to 12 JUN 2025

EMERG SAFE ALT 100 NM 13,700

AHART BAB 12	700	4700	ELEV 113	TDZE 113
--------------	-----	------	----------	----------



CATEGORY	C	D	E
S-15*	560/45	447	(500-7/8)
CIRCLING**	600-1½ 487 (500-1½)	800-2¼ 687 (700-2¼)	800-2½ 687 (700-2½)

HIRL all Rwys

MARYSVILLE, CALIFORNIA

39°08'N - 121°26'W

BEALE AFB (KBAB)

Amdt 6 25JAN24

# HI-TACAN Z RWY 15