

MARYSVILLE, CALIFORNIA

# HI-ILS or LOC Z RWY 15

LOC I-BAB <b>109.5</b>	APCH CRS <b>145°</b>	Rwy ldg TDZE Arprt Elev	<b>12,001</b> <b>113</b> <b>113</b>
---------------------------	-------------------------	-------------------------------	---

(USAF)

BEALE AFB (KBAB)

RADAR or DME required

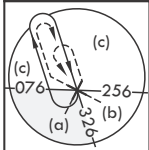
▼ \* When ALS inop, increase CAT CDE RVR to 40 and vis to 3/4 mile.  
\*\* When ALS inop, increase CAT CDE vis to 1 3/8 miles.

ALSF-1

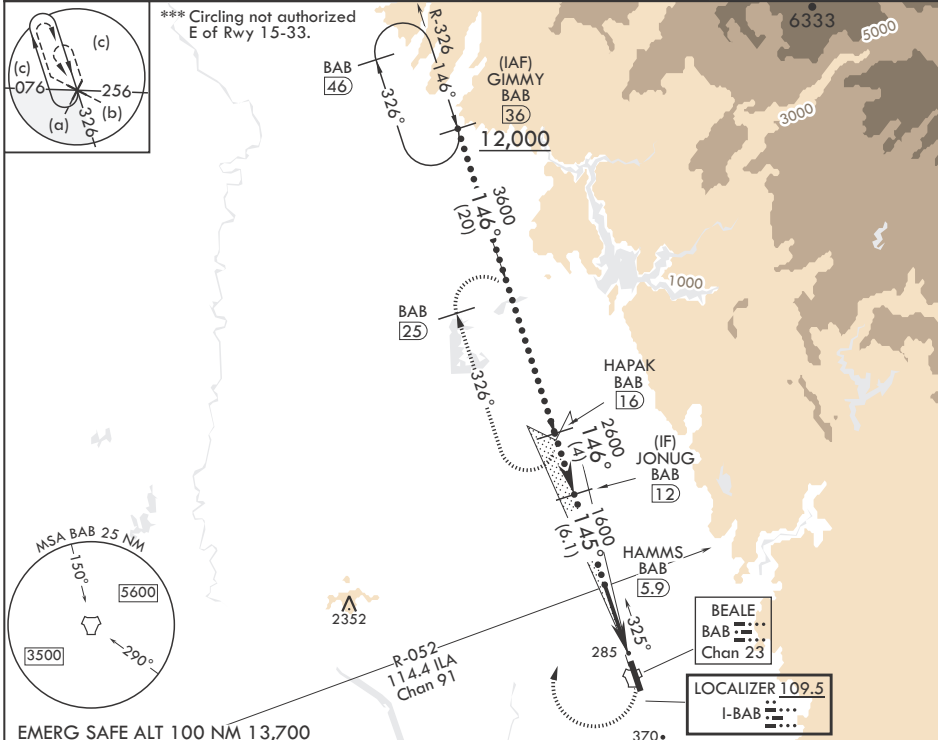


MISSED APPROACH: Climb to to 700 on heading 145°, then climbing right turn to 4400 heading 011° to intercept BAB R-326 to HAPAK and hold, continue climb in hold to 4400.

ATIS* <b>124.55 273.5</b>	NORCAL APP CON <b>125.4 259.1</b>	TOWER* <b>119.4 284.75</b>	GND CON <b>121.6 257.75</b>
------------------------------	--------------------------------------	-------------------------------	--------------------------------



\*\*\* Circling not authorized E of Rwy 15-33.



EMERG SAFE ALT 100 NM 13,700

JONUG BAB (12)	VGSI and glideslope not coincident. (VGSI Angle 2.75/TCH 53)	700	4400	↑ hdg 011°	BAB R-326	ELEV 113	TDZE 113
2600	HAMMS BAB (5.9) ILA R-052	1600	BAB TACAN	BAB HEGOP (1.5)	BAB (2.5)	145°	BCN 240
GS 2.75° TCH 47	1.45°	4.5 NM	0.5	TWR 274	12,001 x 300	33	
CATEGORY	C	D	E	HIRL all Rwys			
S-ILS 15*	313/24	200	(200-½)				
S-LOC 15**	600/50	487	(500-1)				
☐ CIRCLING***	600-1½ 487 (500-1½)	800-2¼ 687 (700-2¼)	800-2½ 687 (700-2½)				

MARYSVILLE, CALIFORNIA

39°08'N - 121°26'W

BEALE AFB (KBAB)

Amdt 6 25JAN24

# HI-ILS or LOC Z RWY 15

SW-2, 15 MAY 2025 to 12 JUN 2025

SW-2, 15 MAY 2025 to 12 JUN 2025