

TACAN RWY 12

TACAN VBG Chan 59(Y)	APCH CRS 129°	Rwy ldg 15,000 TDZE 265 Arprt Elev 368
--------------------------------	-------------------------	-------------------------------------------------------------------

[USSF]

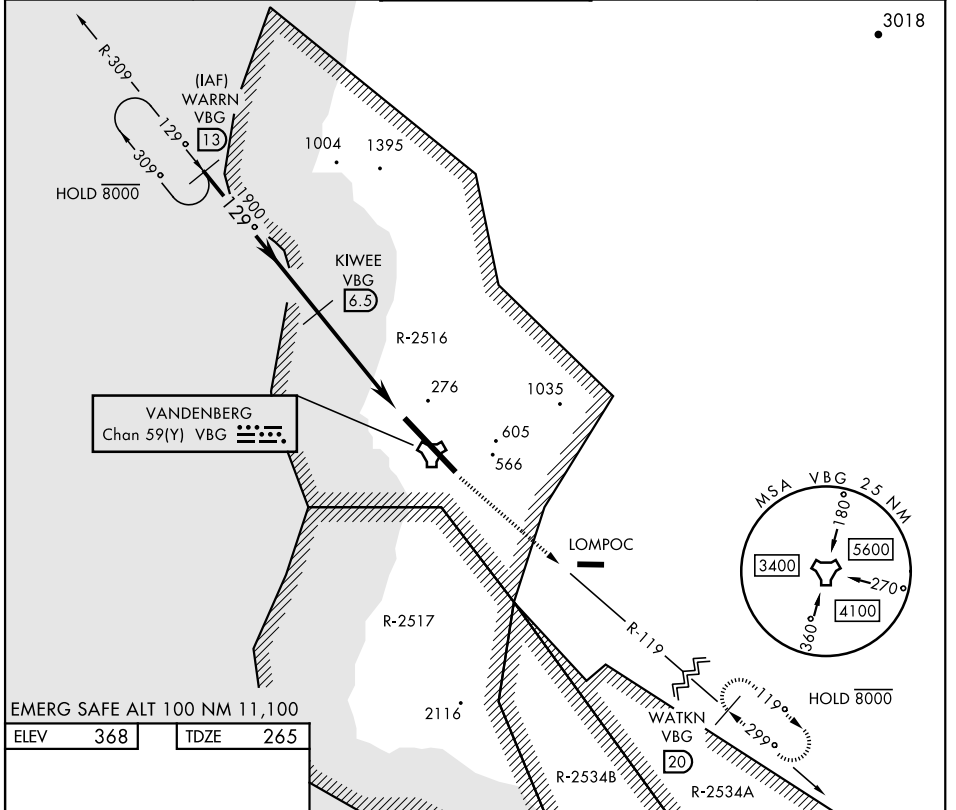
VANDENBERG SFB (KVBG)

⚠ * When ALS inop, increase CAT AB RVR to 55 and vis to 1 mile; CAT CDE vis to 1 3/8 miles.

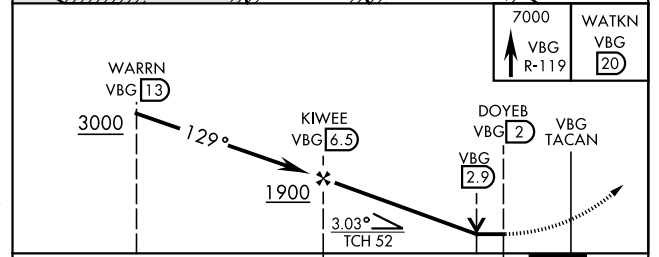
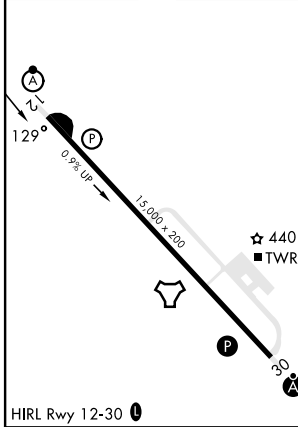
ALSF-2

MISSED APPROACH: Climb out VBG TACAN R-119 until 20 DME (WATKN) and hold. Continue climb in hold maintain 7000.

ATIS 133.125 257.975	SANTA BARBARA APP/DEP CON 124.15 327.8	TOWER★ 124.95 0 (CTAF) 326.2	GND CON 121.75 275.8	CLNC DEL 121.75 275.8
--------------------------------	-----------------------------------------------------	-----------------------------------------------	--------------------------------	---------------------------------



EMERG SAFE ALT 100 NM 11,100
ELEV 368 TDZE 265



CATEGORY	A	B	C	D	E
S-12*	740/24 475 (400-1/2)		740/50 475 (400-1)		
CIRCLING	980-1 612 (700-1)	1000-1 632 (700-1)	1020-1 3/4 652 (700-1 3/4)	1180-2 3/4 812 (900-2 3/4)	1560-3 1192 (1200-3)

TACAN RWY 12

SW-3, 15 MAY 2025 to 12 JUN 2025

SW-3, 15 MAY 2025 to 12 JUN 2025