

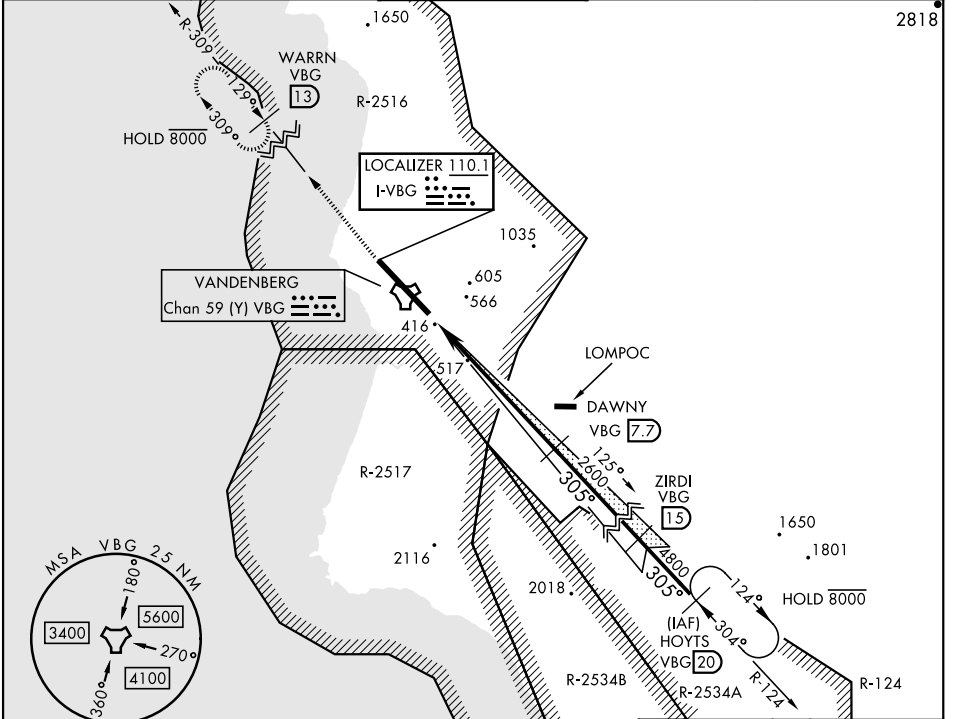
ILS or LOC/DME RWY 30

| | | |
|---------------------------|-------------------------|--|
| LOC I-VBG 110.1 | APCH CRS 305° | Rwy Idg 15,000 TDZE 368 Arpt Elev 368 |
|---------------------------|-------------------------|--|

[USSF]

VANDENBERG SFB (KVBG)

| | | | | |
|--|---|--|---|---------------------------------|
| DME required | | ALSF-2 | MISSED APPROACH: Climb out VBG TACAN R-309 to WARRN and hold. Continue climb in hold maintain 4000. | |
| <p>▼ * When ALS inop, increase RVR to 40 and vis to 3/4 mile. ** When ALS inop, increase CAT AB RVR to 55 and vis to 1 mile, CAT CDE vis to 1 1/2 miles.</p> | | | | |
| ATIS 133.125 257.975 | SANTA BARBARA APP/DEP CON 124.15 327.8 | TOWER ★ 124.95 (CTAF) 326.2 | GND CON 121.75 275.8 | CLNC DEL 121.75 275.8 |



SW-3, 15 MAY 2025 to 12 JUN 2025

SW-3, 15 MAY 2025 to 12 JUN 2025

| | | | | | |
|------------------------------|----------------------|---|-------------------------------|-------------------------------|-------------------------|
| EMERG SAFE ALT 100 NM 11,100 | | ELEV 368 | TDZE 368 | | |
| 4000 VBG R-309 | WARRN VBG 13 | VGSI and ILS Glideslope not coincident. | DAWNY VBG 7.8 | | |
| 2600 | 2600 | 305° | 6000 | | |
| ZIRDI VBG 15 | HOYTS VBG 20 | GS 3.00° | TCH 72 | | |
| 4800 | 4800 | 305° | 6000 | | |
| 0.5 NM | 6.3 NM | | | | |
| CATEGORY | A | B | C | D | E |
| S-ILS 30 * | 568/24 | | 200 | (200-1/2) | |
| S-LOC/DME 30 ** | 900/24 | 532 (600-1/2) | 900/55 | 532 (600-1) | |
| CIRCLING | 980-1 612 (700-1) | 1000-1 632 (700-1) | 1020-1 3/4 652 (700-1 3/4) | 1180-2 3/4 812 (900-2 3/4) | 1560-3 1192 (1200-3) |
| | HIRL Rwy 12-30 | | | | |

ILS or LOC/DME RWY 30