

# HI-TACAN RWY 30

TACAN VBG Chan 59(Y)	APCH CRS 299°	Rwy Idg 15,000 TDZE 368 Arpt Elev 368
-------------------------	------------------	---

[USSF]

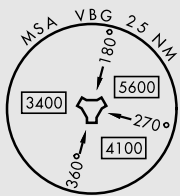
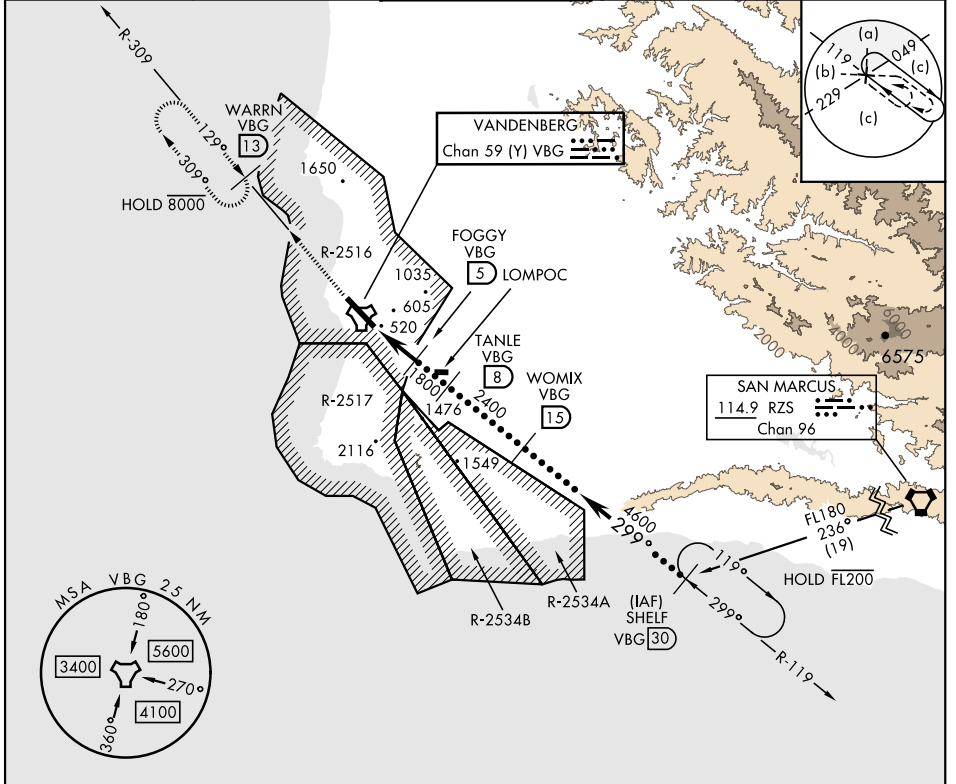
VANDENBERG SFB (KVBG)

ALSF-2
 

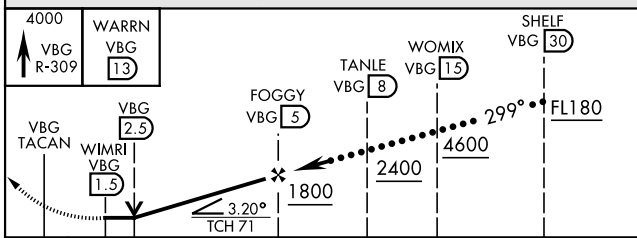
 MISSED APPROACH: Climb out VBG TACAN R-309 to WARRN and hold. Continue climb in hold maintain 4000.

\*When ALS inop, increase vis to 1½ miles.

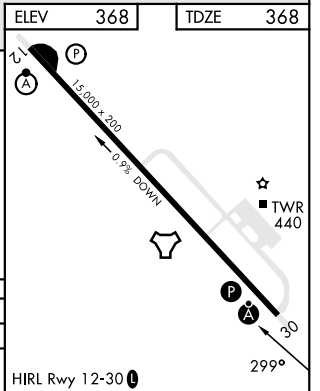
ATIS 133.125 257.975	SANTA BARBARA APP/DEP CON 124.15 327.8	TOWER ★ 124.95 (CTAF) 326.2	GND CON 121.75 275.8	CLNC DEL 121.75 275.8
-------------------------	--	--------------------------------	-------------------------	--------------------------



EMERG SAFE ALT 100 NM 11,100



CATEGORY	C	D	E
S-30*	920/60	552 (600-1½)	
CIRCLING	1020-1¾ 652 (700-1¾)	1180-2¾ 812 (900-2¾)	1560-3 1192 (1200-3)



# HI-TACAN RWY 30

SW-3, 15 MAY 2025 to 12 JUN 2025

SW-3, 15 MAY 2025 to 12 JUN 2025