

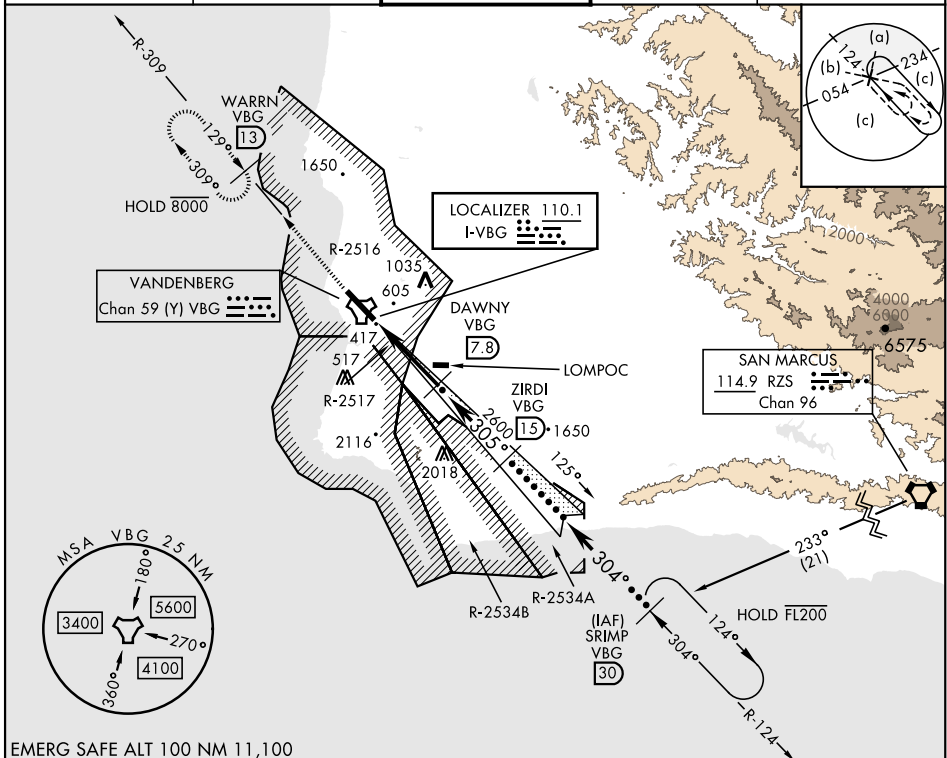
# HI-ILS or LOC/DME RWY 30

LOC I-VBG <b>110.1</b>	APCH CRS <b>305°</b>	Rwy Idg <b>15,000</b> TDZE <b>368</b> Arpt Elev <b>368</b>	[USSF]	VANDENBERG SFB (KVBG)
---------------------------	-------------------------	--	--------	-----------------------

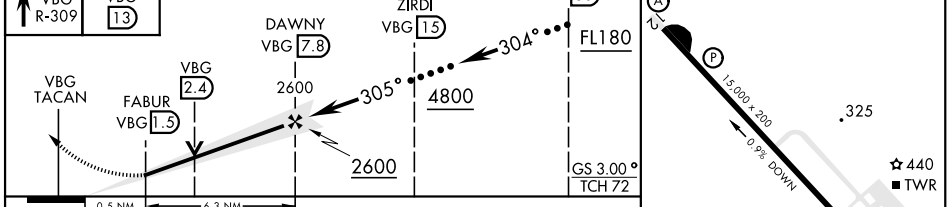
DME required	ALSF-2	MISSED APPROACH: Climb out VBG TACAN R-309 to WARRN and hold. Continue climb in hold maintain 4000.
--------------	--------	---

\* When ALS inop, increase CAT CDE RVR to 40 and vis to 3/4 mile.  
 \*\* When ALS inop, increase CAT CDE vis to 1 1/2 miles.

ATIS <b>133.125 257.975</b>	SANTA BARBARA APP/DEP CON <b>124.15 327.8</b>	TOWER★ <b>124.95</b> (CTAF) <b>326.2</b>	GND CON <b>121.75 275.8</b>	CLNC DEL <b>121.75 275.8</b>
--------------------------------	--	---	--------------------------------	---------------------------------



4000 VBG R-309	WARRN VBG 13	VGSI and ILS Glideslope not coincident.	ZIRDI VBG 15	SRIMP VBG 30	ELEV 368	TDZE 368
----------------	--------------	---	--------------	--------------	----------	----------



CATEGORY	C	D	E
S-ILS 30 *	568/24	200 (200-1/2)	
S-LOC/ ** DME 30	900/55	532 (600-1)	
CIRCLING	1020-13/4 652 (700-13/4)	1180-23/4 812 (900-23/4)	1560-3 1192 (1200-3)

# HI-ILS or LOC/DME RWY 30

SW-3, 15 MAY 2025 to 12 JUN 2025

SW-3, 15 MAY 2025 to 12 JUN 2025