

# GAVIOTA THREE DEPARTURE (GVO3 • GVO)

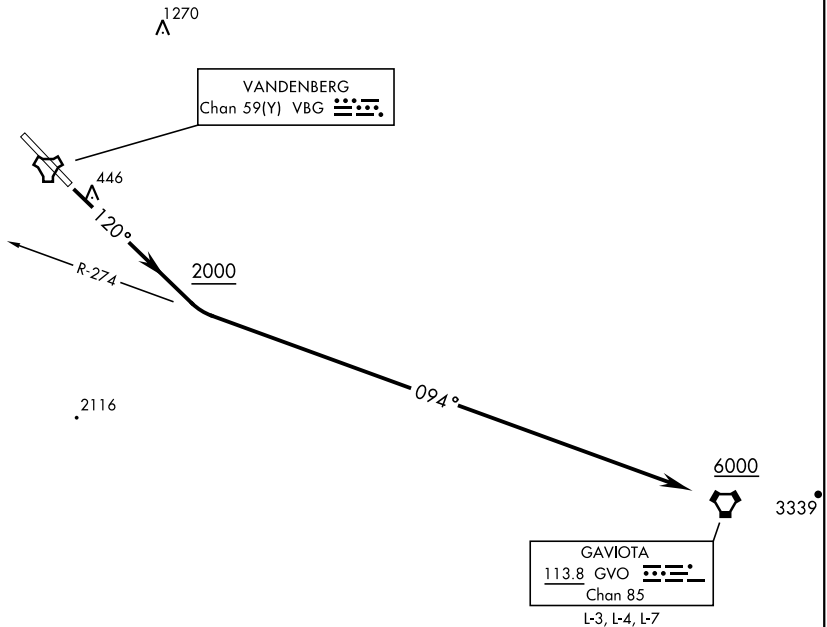
LOMPOC, CALIFORNIA

AL-770 [USSF]

Rwy	Knots	60	120	180	240	300	360
12	V/V(fpm)	330	660	990	1320	1650	1980

ATIS  
 133.125 257.975  
 GND CON  
 121.75 275.8  
 CLNC DEL  
 121.75 275.8  
 VANDENBERG TOWER ★  
 124.95 326.2  
 SANTA BARBARA DEP CON  
 124.15 327.8

Minimum Climb Rate to 1500.



SW-3, 15 MAY 2025 to 12 JUN 2025

SW-3, 15 MAY 2025 to 12 JUN 2025

Use extreme caution for extensive UAS ops in the vicinity



## DEPARTURE ROUTE DESCRIPTION

TAKE-OFF RWY 12: Climb on track 120° to 2000. Then climbing left turn to intercept the GVO VORTAC R-274 inbound to GVO. Cross GVO at or above 6000. Expect vectors to first filed fix/route prior to GVO.

# GAVIOTA THREE DEPARTURE (GVO3 • GVO)

Amdt 1 02DEC21