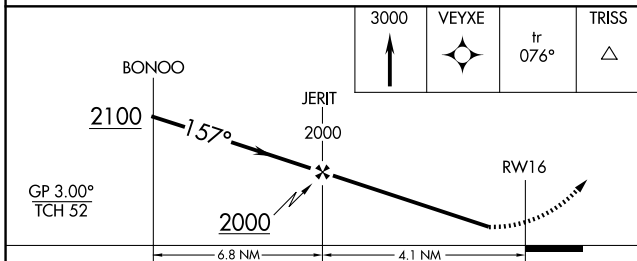
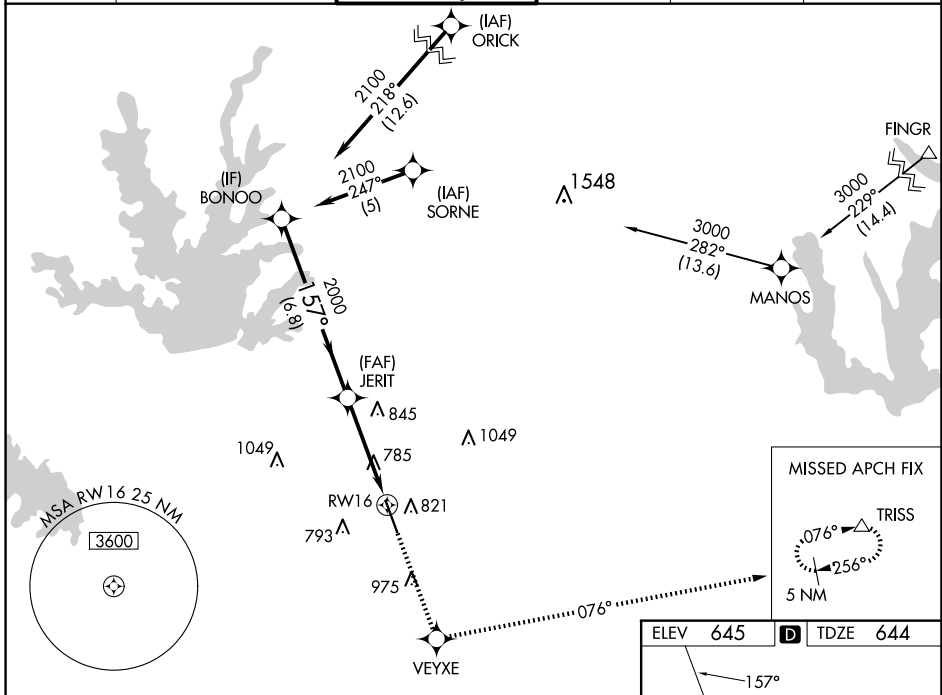


WAAS CH 82202 W16A	APP CRS 157°	Rwy ldg 6224 TDZE 644 Apt Elev 645
---------------------------------	------------------------	---

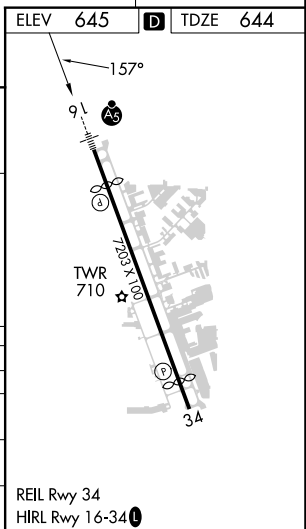
RNAV (GPS) RWY 16

ADDISON (ADS)

RNP APCH-GPS.		MALSR	MISSED APPROACH: Climb to 3000 direct VEYXE and on track 076° to TRISS and hold.		
<p>⚠ For uncompensated Baro-VNAV systems, LNAV/VNAV NA below -16°C or above 54°C. Rwy 16 helicopter visibility reduction below 1 SM NA. Inop table does not apply to LPV all Cats, and LNAV Cats A/B. For inop ALS, increase LNAV/VNAV all Cats visibility to 1¼ SM, and LNAV Cats C/D to 1½ SM.</p>					
ATIS 133.4	LONE STAR APP CON 124.3 282.275	ADDISON TOWER ★ 126.0 (CTAF) 0 239.0	GND CON 121.6	CLNC DEL 119.55	UNICOM 122.95



CATEGORY	A	B	C	D
LPV DA	944-1		300 (300-1)	
LNAV/VNAV DA	1077-1		433 (500-1)	
LNAV MDA	1100-1		456 (500-1)	
CIRCLING	1200-1 555 (600-1)		1280-1¼ 635 (700-1¼)	1400-2½ 755 (800-2½)



SC-2, 15 MAY 2025 to 12 JUN 2025

SC-2, 15 MAY 2025 to 12 JUN 2025