

LOC/DME I-TBQ <b>110.1</b> Chan <b>38</b>	APP CRS <b>337°</b>	Rwy Idg <b>6431</b> TDZE <b>645</b> Apt Elev <b>645</b>
---	------------------------	---

# ILS or LOC RWY 34

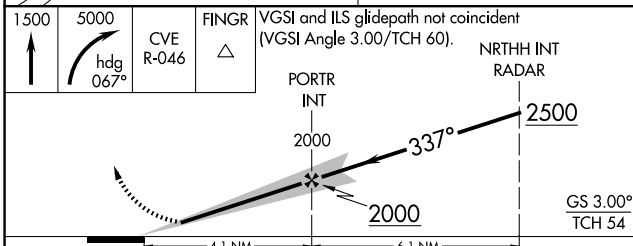
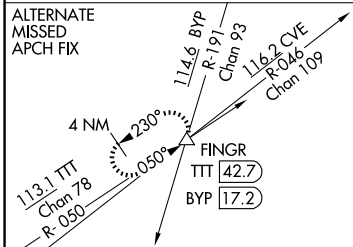
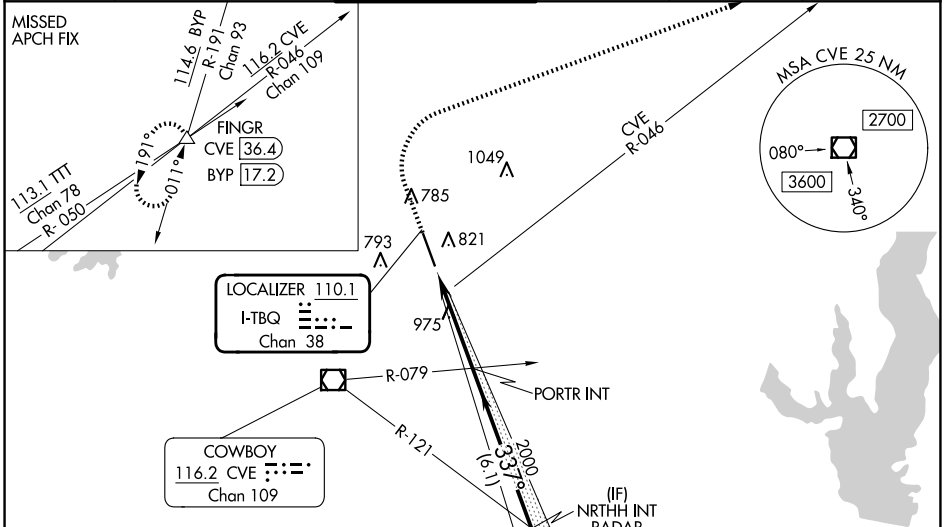
ADDISON (ADS)

DME Required. RADAR required for procedure entry.

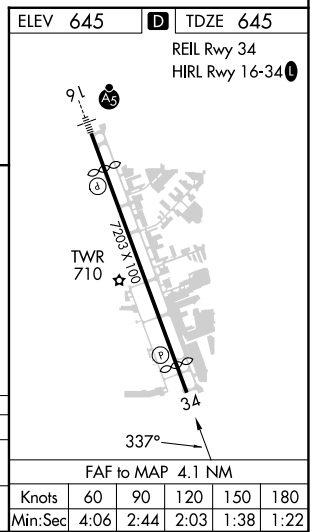
**▽**  
**▲** Rwy 34 helicopter visibility reduction below 3/4 SM NA.

MISSED APPROACH: Climb to 1500 then climbing right turn to 5000 on heading 067° and CVE VOR/DME R-046 to FINGR/CVE 36.4 DME and hold.

ATIS <b>133.4</b>	LONE STAR APP CON <b>124.3 282.275</b>	ADDISON TOWER * <b>126.0 (CTAF) 239.0</b>	GND CON <b>121.6</b>	CLNC DEL <b>119.55</b>	UNICOM <b>122.95</b>
----------------------	---	--	-------------------------	---------------------------	-------------------------



CATEGORY	A	B	C	D
S-ILS 34	895-3/4 250 (300-3/4)			
S-LOC 34	1240-1 595 (600-1)		1240-1 3/4 595 (600-1 3/4)	



SC-2, 15 MAY 2025 to 12 JUN 2025

SC-2, 15 MAY 2025 to 12 JUN 2025