

LOC/DME I-ADS 110.1 Chan 38	APP CRS 157°	Rwy Idg 6224 TDZE 644 Apt Elev 645
---	------------------------	---

ILS or LOC RWY 16

ADDISON (ADS)

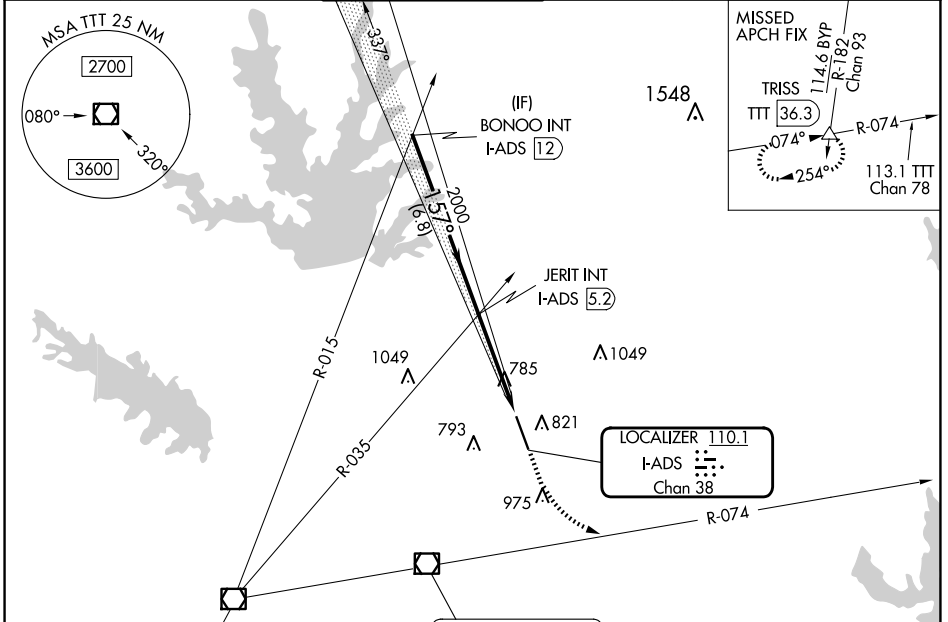
RADAR required for procedure entry.

MAJLSR

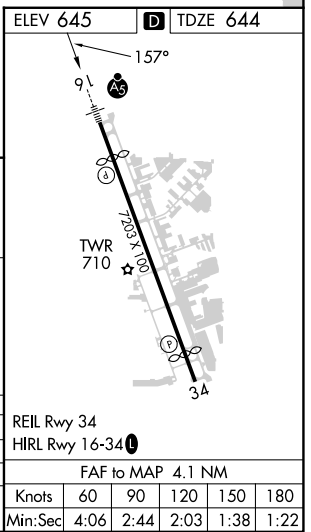
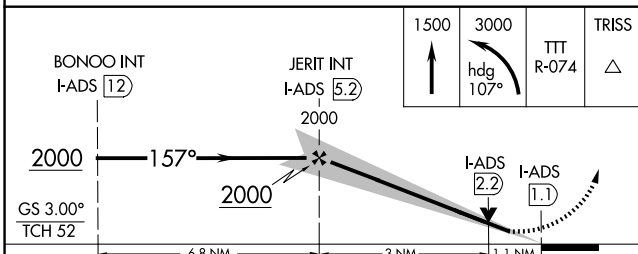
MISSED APPROACH: Climb to 1500 then climbing left turn to 3000 on heading 107° and TTT VOR/DME R-074 to TRISS INT/TTT 36.3 DME and hold.

W Rwy 16 helicopter visibility reduction below 1 SM NA. Inop table does not apply to S-ILS-16 all Cats, S-LOC-16 Cats A/B.
A For inop ALS, increase S-LOC-16 Cats C/D visibility to 1 1/8 SM.

ATIS 133.4	LONE STAR APP CON 124.3 282.275	ADDISON TOWER* 126.0 (CTAF) 0 239.0	GND CON 121.6	CLNC DEL 119.55	UNICOM 122.95
----------------------	---	---	-------------------------	---------------------------	-------------------------



MAVERICK 113.1 TTT Chan 78	COWBOY 116.2 CVE Chan 109	LOCALIZER 110.1 I-ADS Chan 38
----------------------------------	---------------------------------	--



CATEGORY	A	B	C	D
S-ILS 16		894-1	250 (300-1)	
S-LOC 16		1040-1	396 (400-1)	
CIRCLING	1200-1	555 (600-1)	1280-1 3/4 635 (700-1 3/4)	1400-2 1/2 755 (800-2 1/2)

SC-2, 15 MAY 2025 to 12 JUN 2025

SC-2, 15 MAY 2025 to 12 JUN 2025