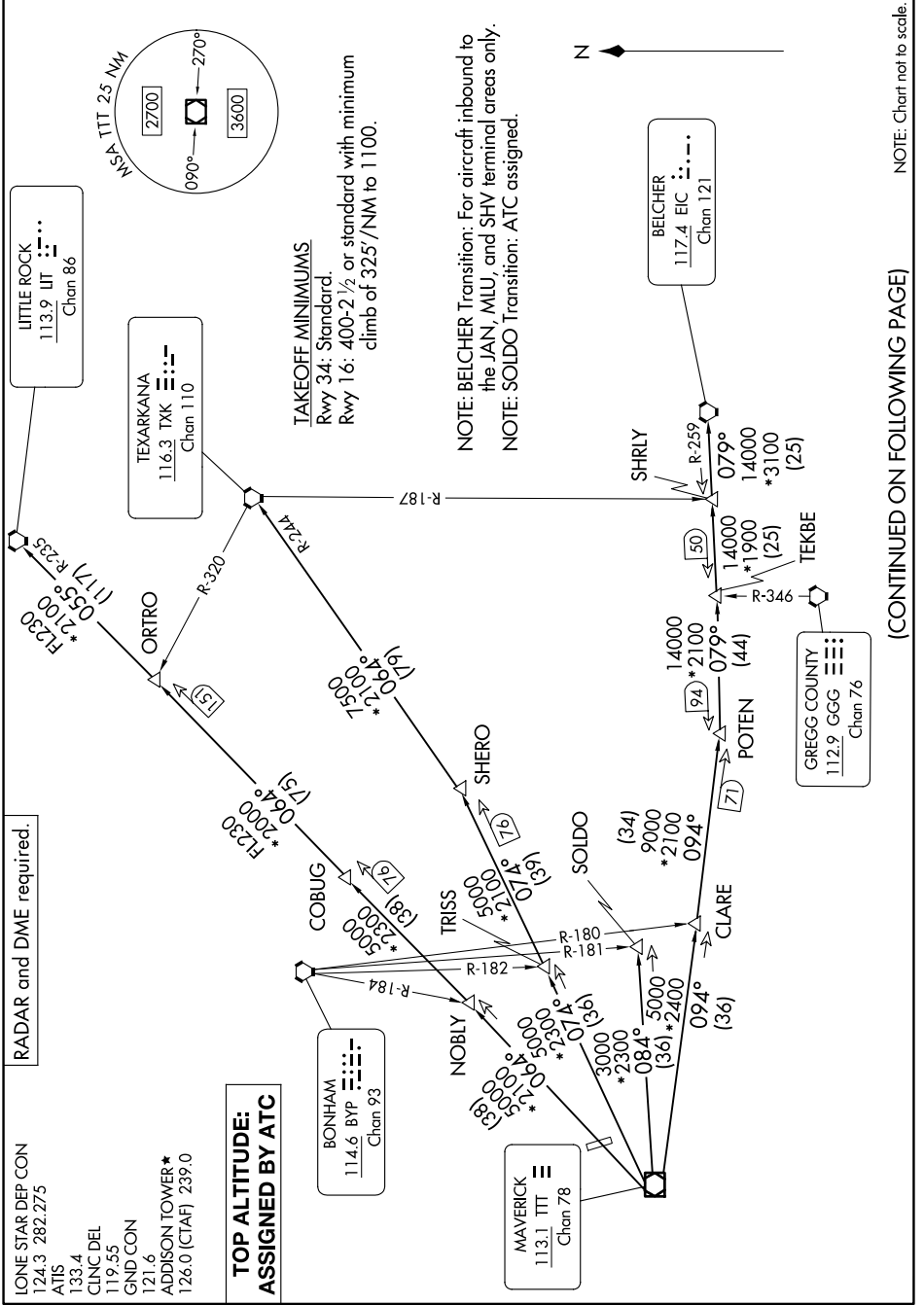


# DALLAS THREE DEPARTURE

DALLAS, TEXAS

SC-2, 15 MAY 2025 to 12 JUN 2025



**RADAR and DME required.**

LONE STAR DEP CON  
124.3 282.275  
ATIS  
133.4  
CLNC DEL  
119.55  
GND CON  
121.6  
ADDISON TOWER\*  
126.0 (CTAF) 239.0

**TOP ALTITUDE:  
ASSIGNED BY ATC**

**TAKEOFF MINIMUMS**  
Rwy 34: Standard  
Rwy 16: 400-2 1/2 or standard with minimum  
climb of 325'/NM to 1100.

**NOTE: BELCHER Transition: For aircraft inbound to  
the JAN, MIU, and SHV terminal areas only.  
NOTE: SOLDO Transition: ATC assigned.**

(CONTINUED ON FOLLOWING PAGE)

NOTE: Chart not to scale

# DALLAS THREE DEPARTURE

DALLAS, TEXAS

SC-2, 15 MAY 2025 to 12 JUN 2025