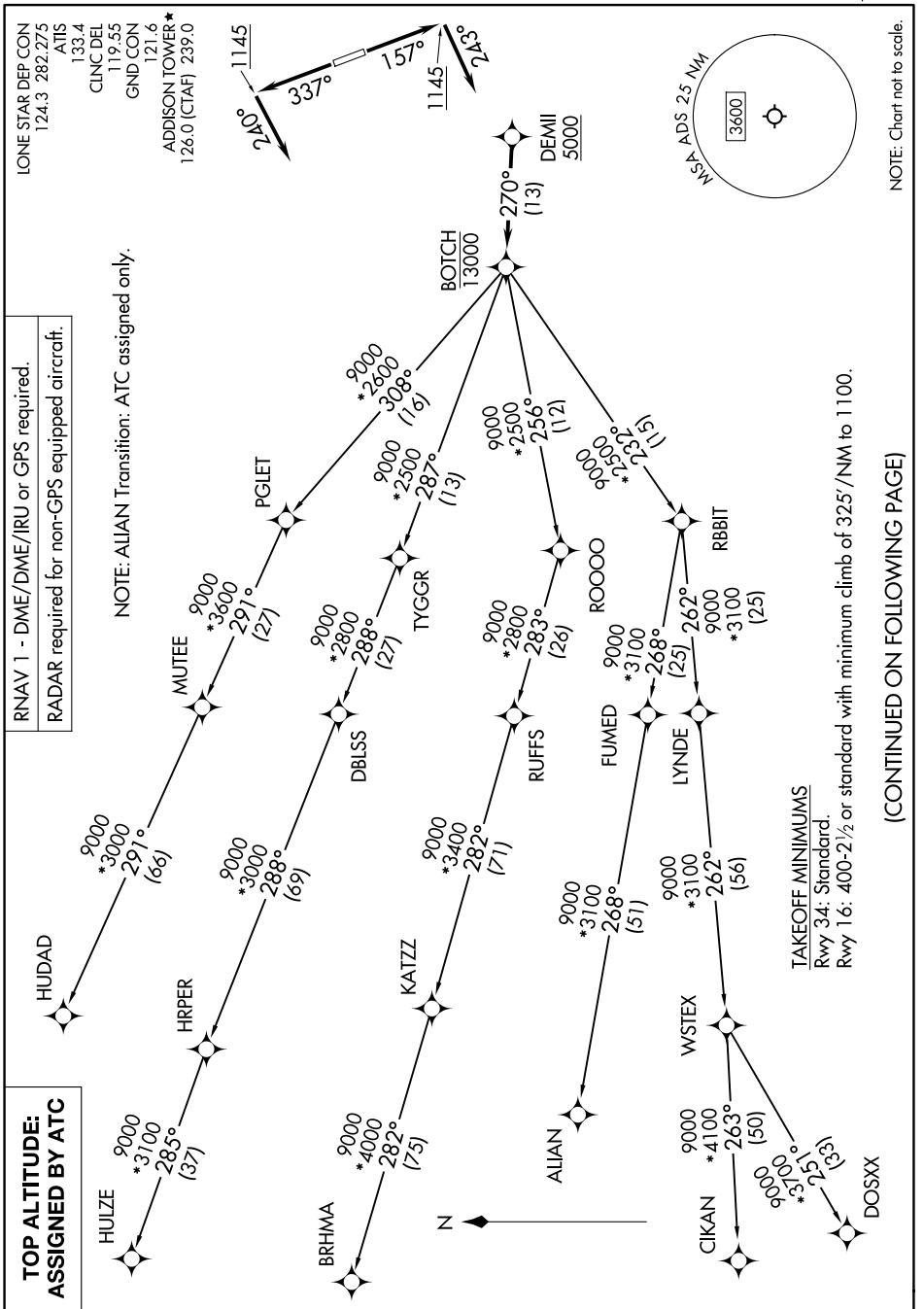


BOTCH ONE DEPARTURE (RNAV)



NOTE: ALIAN Transition: ATC assigned only.

RNAV 1 - DME/DME/IRU or GPS required.
RADAR required for non-GPS equipped aircraft.

TAKEOFF MINIMUMS
 Rwy 34: Standard.
 Rwy 16: 400-2 1/2 or standard with minimum climb of 325'/NM to 1100.

(CONTINUED ON FOLLOWING PAGE)

NOTE: Chart not to scale.

BOTCH ONE DEPARTURE (RNAV)