

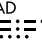
(BLUSH2.BLUSH) 23334


# BLUSH TWO DEPARTURE

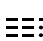
AL-759 (FAA)

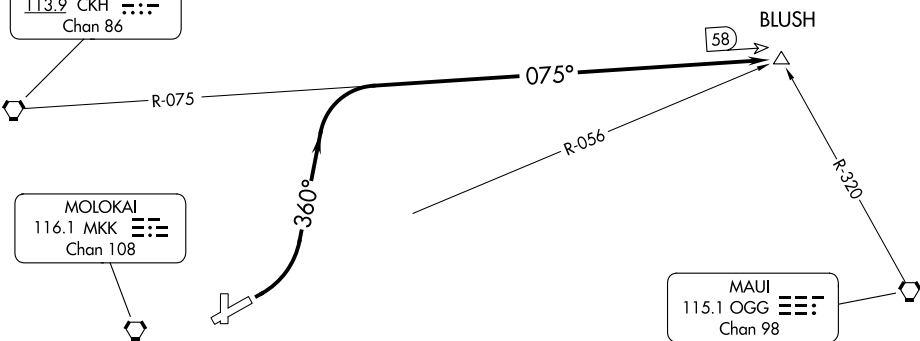
MOLOKAI (MKK) (PHMK)  
KAUNAKAKAI, HAWAII

ATIS  
128.2  
GND CON  
121.9  
MOLOKAI TOWER ★  
125.7 306.2  
HCF CENTER  
124.1 317.5

KOKO HEAD  
113.9 CKH   
Chan 86

MOLOKAI  
116.1 MKK   
Chan 108

MAUI  
115.1 OGG   
Chan 98



PAC, 17 APR 2025 to 12 JUN 2025

PAC, 17 APR 2025 to 12 JUN 2025

### TAKEOFF MINIMUMS

Rwy 17, 23, 35: NA-ATC.

Rwy 5: 300-1 with minimum climb of 325' per NM to 1500 or standard with minimum climb of 540' per NM to 800.

NOTE: Chart not to scale.



### DEPARTURE ROUTE DESCRIPTION

TAKEOFF RUNWAY 5: Climbing left turn to 5000 on heading 360° and CKH VORTAC R-075 to BLUSH INT/CKH 58 DME.

BLUSH TWO DEPARTURE  
(BLUSH2.BLUSH) 29MAY14

KAUNAKAKAI, HAWAII  
MOLOKAI (MKK) (PHMK)