

WAAS CH <b>82410</b> <b>W23A</b>	APP CRS <b>233°</b>	Rwy Idg <b>5028</b>
		TDZE <b>623</b>
		Apt Elev <b>626</b>

# RNAV (GPS) RWY 23

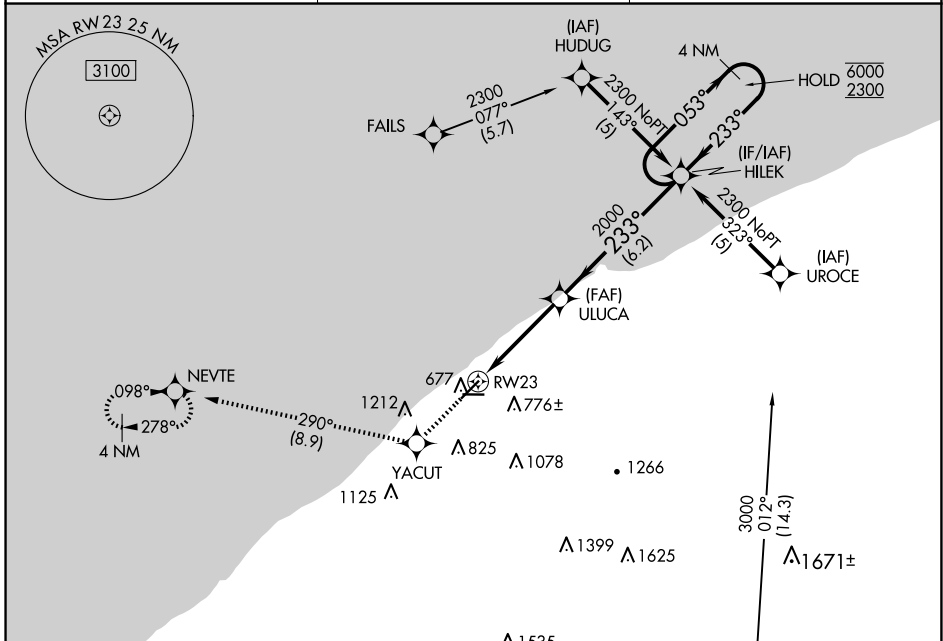
LAKE COUNTY EXEC (LNN)

RNP APCH - GPS.

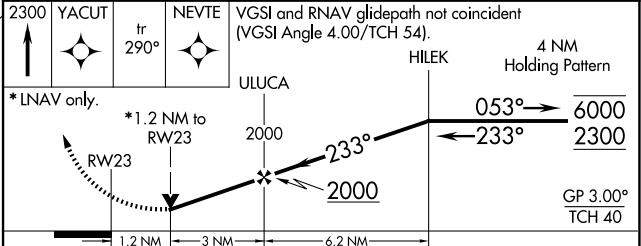
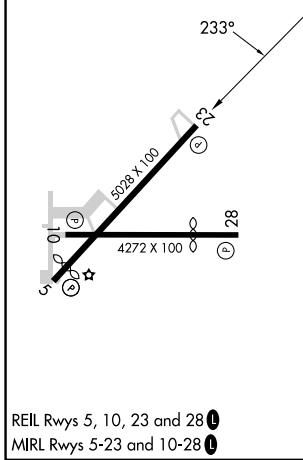
▼ Rwy 23 helicopter visibility reduction below 3/4 SM NA. For uncompensated Baro-VNAV systems, LNAV/VNAV NA below -16°C or above 54°C.

MISSED APPROACH: Climb to 2300 direct YACUT and on track 290° to NEVTE and hold.

AWOS-3PT <b>119.225</b>	CLEVELAND APP CON <b>125.35 346.325</b>	UNICOM <b>122.725</b> (CTAF) <b>0</b>
----------------------------	--	--



ELEV 626	TDZE 623
----------	----------



CATEGORY	A	B	C	D
LPV DA		1031-1½	408 (500-1½)	NA
LNAV/VNAV DA		1142-1¾	519 (600-1¾)	NA
LNAV MDA	1200-1	577 (600-1)	1200-1½ 577 (600-1½)	NA
CIRCLING	1200-1	574 (600-1)	1520-2¾ 894 (900-2¾)	NA

EC-2, 15 MAY 2025 to 12 JUN 2025

EC-2, 15 MAY 2025 to 12 JUN 2025